



Cascade™

Sculptural Blade Baffles





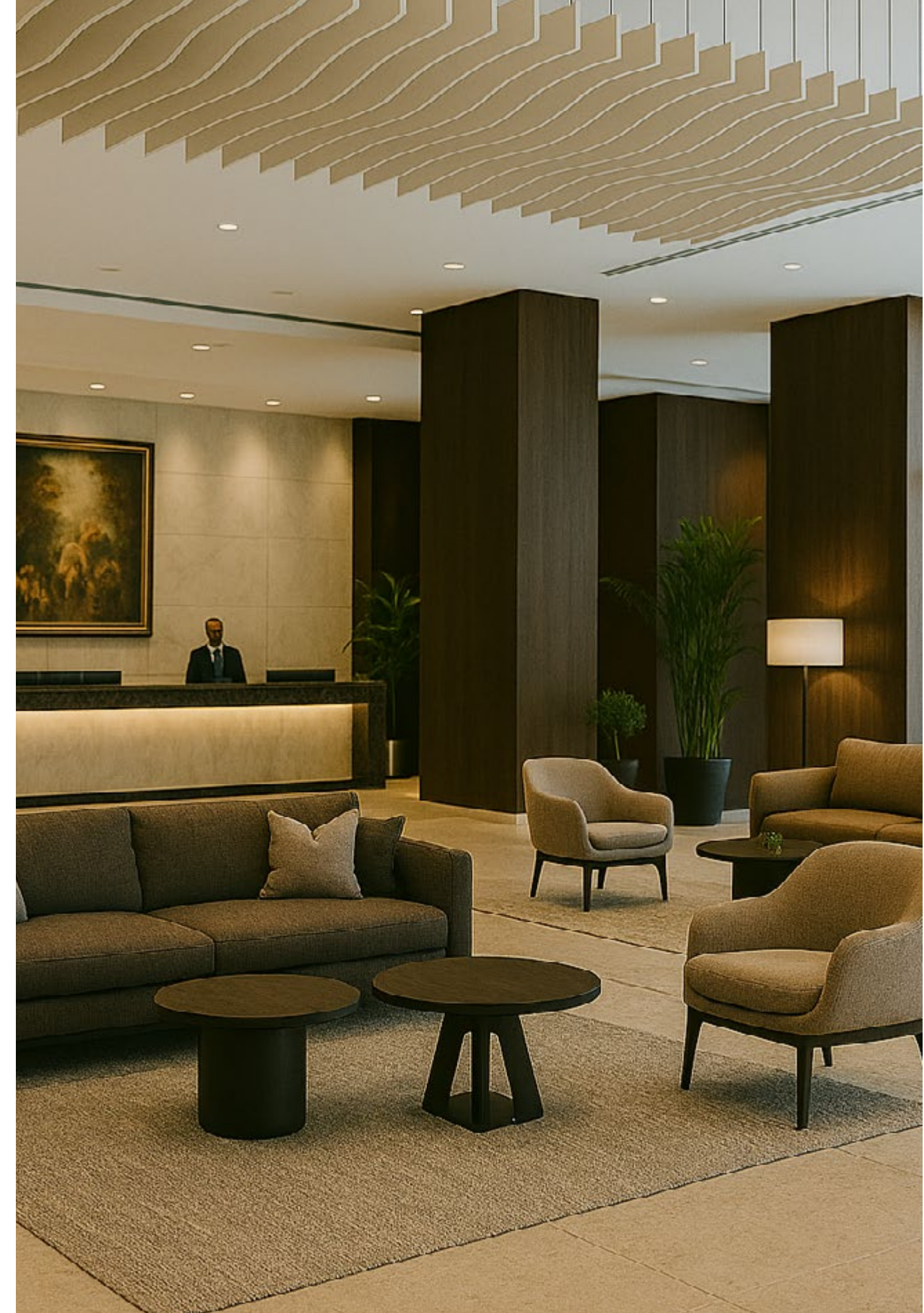
Cascade™ : Sculptural Blade Baffles

Flow. Rhythm. Acoustic Refinement.

Cascade™ blade baffles elegantly evoke the tranquil movement of gently cascading pages, creating an artful and refined visual rhythm. Featuring gracefully undulating vertical blades suspended from the ceiling, Cascade™ brings sophisticated depth and enhanced acoustic performance to your space. Ideal for design-driven environments, it transforms ceilings into serene, flowing displays of acoustic artistry with clean lines and fluid motion.

Key Features

- Sculptural vertical blade design with flowing, undulating layers
- Creates rhythmic depth and refined architectural interest
- High-performance acoustic absorption with NRC up to 1.00
- Made from 60%+ recycled PET felt for sustainability
- Modular and configurable for custom layouts
- Adjustable aircraft cable suspension system for easy install
- ASTM E84 Class A fire rating
- Available in custom sizes and colors



Design Your Layout

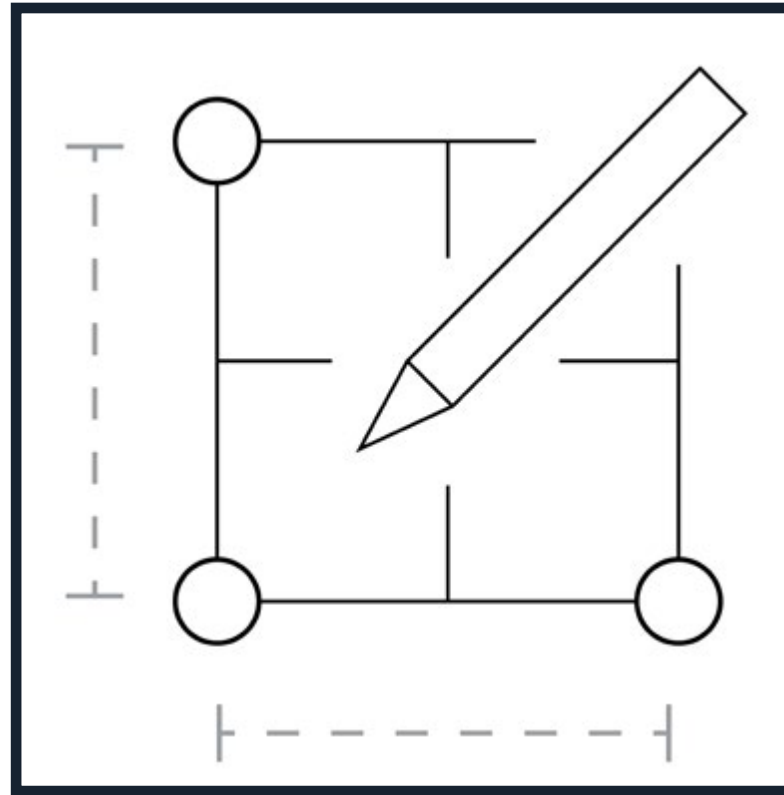
1 Ceiling layout and grid density

2 Spacing between multiple Matrix units

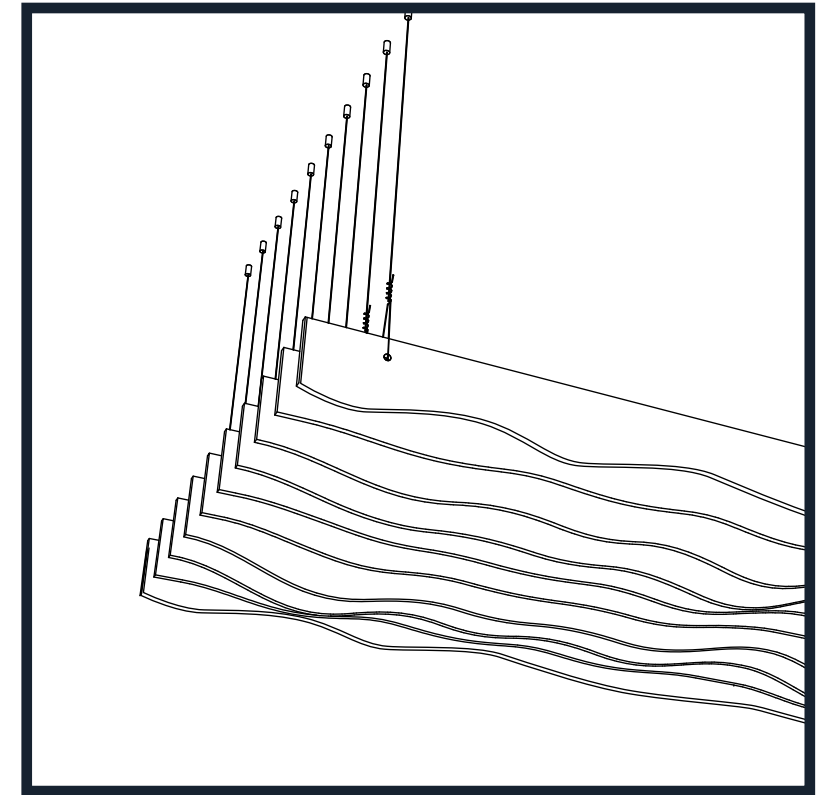
3 Suspension height and mounting preferences

4 Color Selection

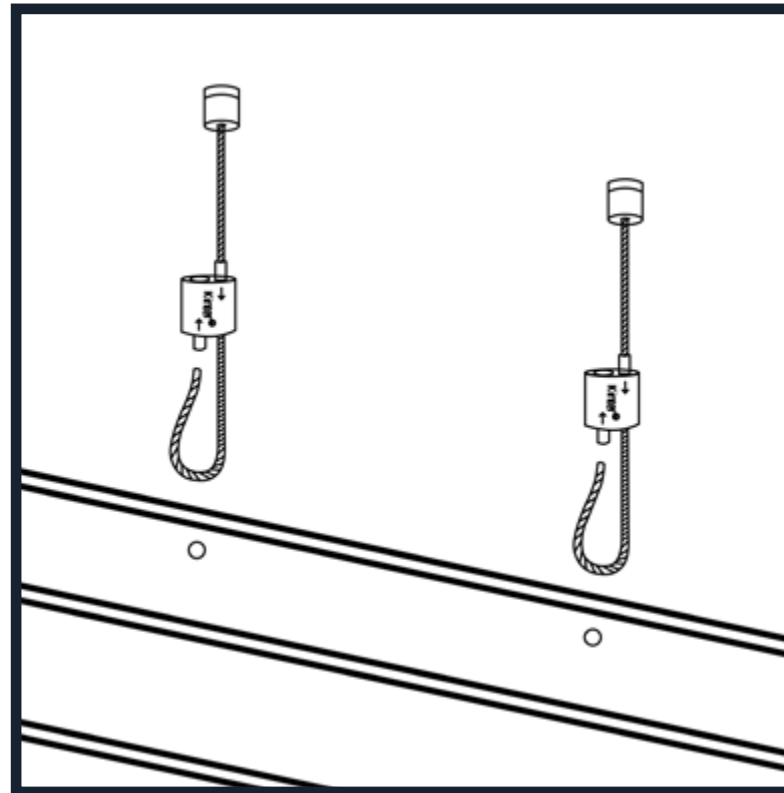
1.



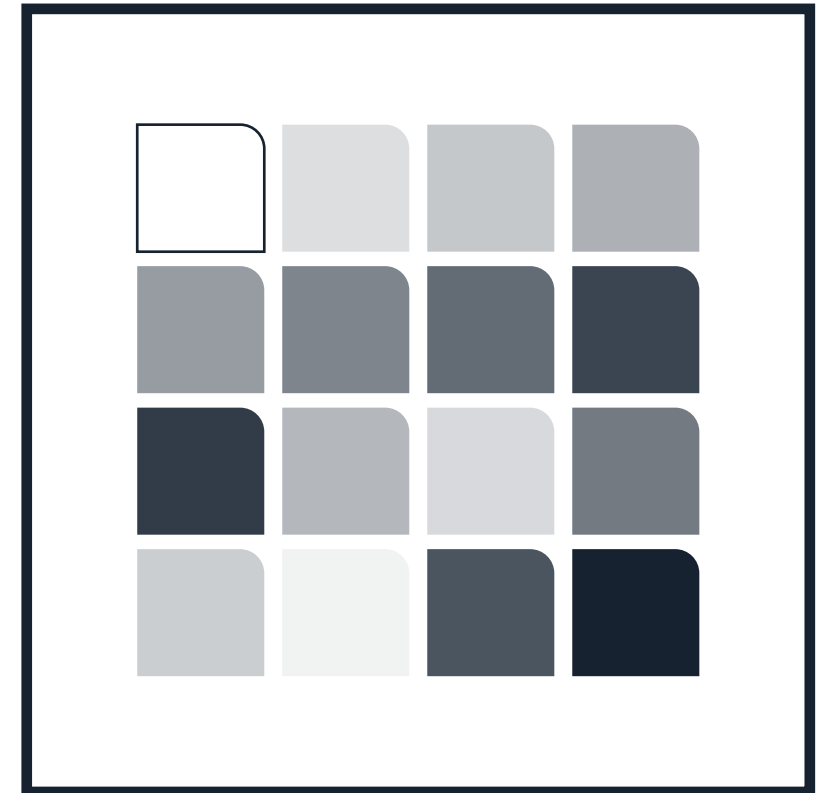
2.



3.



4.



Design Your Layout – Flowing Vertical Elements, Acoustic Harmony

Cascade™ transforms overhead space with layers of vertical blades that mimic the motion of cascading pages. Whether installed individually or as a continuous array, Cascade™ delivers a sophisticated blend of acoustic control and architectural artistry.

Collaborate with Our Design Team

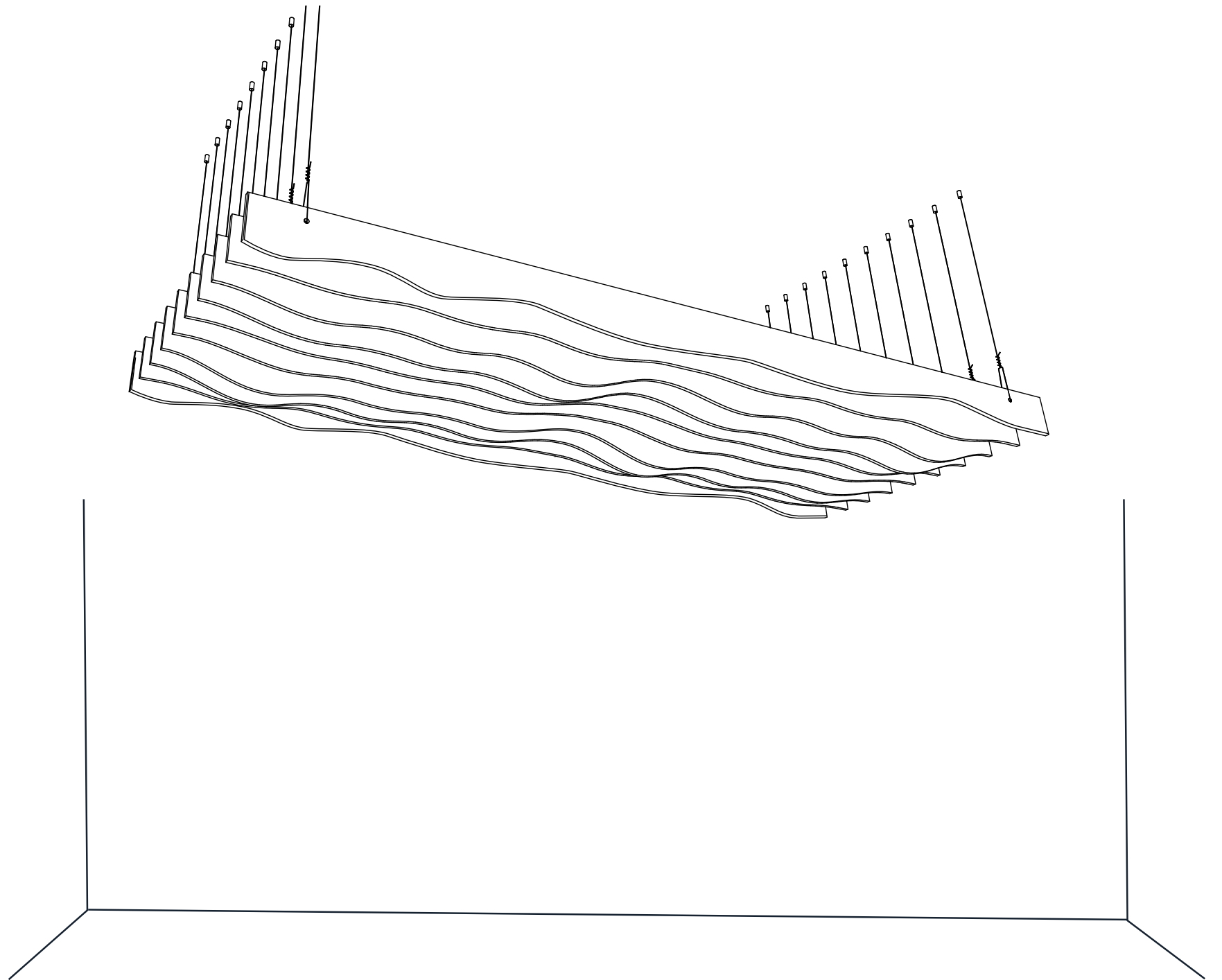
Our experts will help you define blade spacing, suspension heights, and layout that suit your acoustic and aesthetic goals.

Already Have a Vision?

Send us your sketches or inspiration photos, and we will create a tailored Cascade™ layout perfect for your project.

Details That Help Us Tailor Your Layout

- Ceiling height and room dimensions
- Desired acoustic coverage and focal points
- Coordination with lighting, HVAC, and sprinklers
- Finish preferences and overall design intent



Mounting & Connections - Cable Freeform Suspension System

Cable Freeform Suspension System

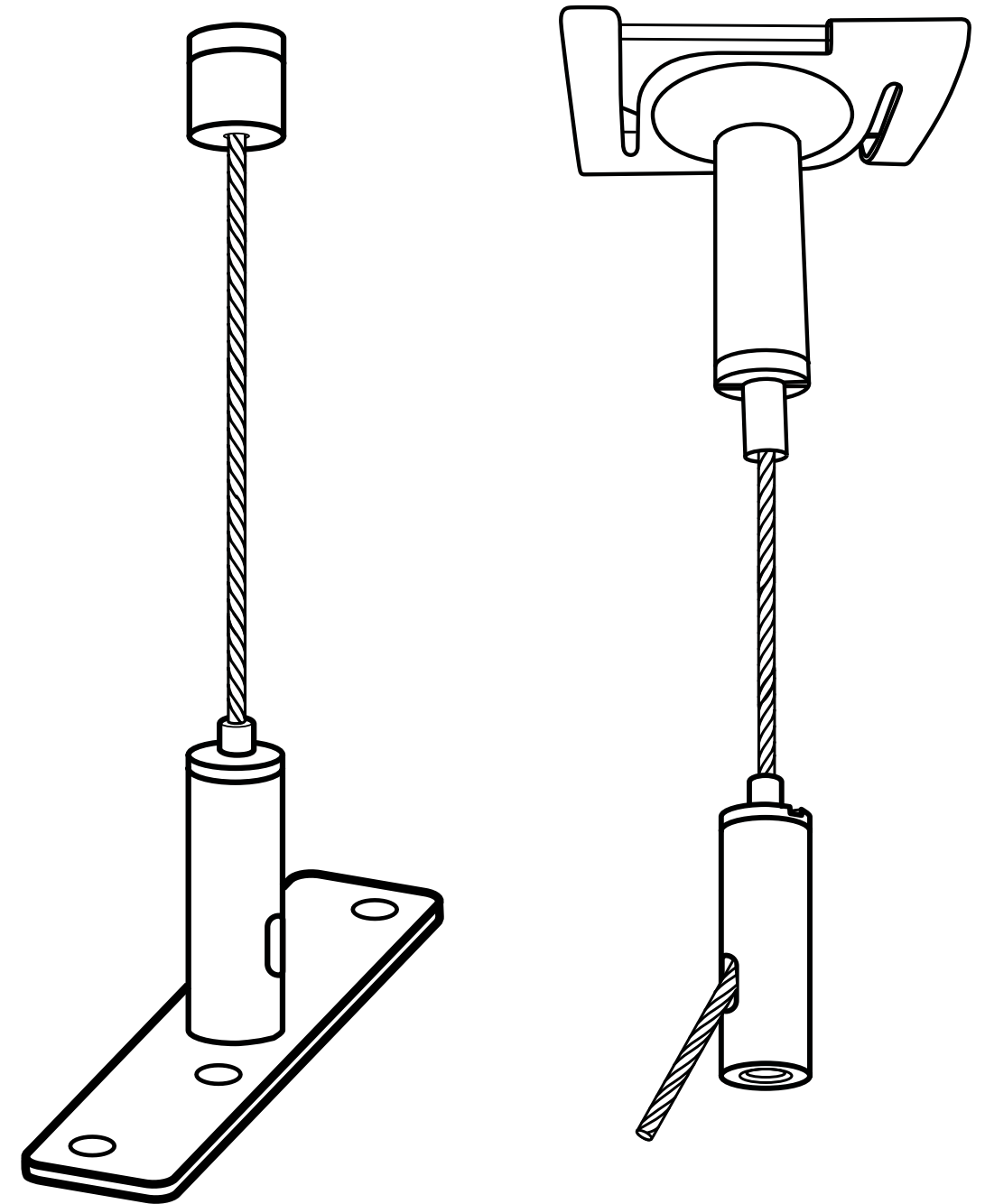
Straight™ baffles are suspended using ONNiT's aircraft cable system, which provides adjustability for easy leveling and alignment. Installation is fast, with minimal hardware and clean coordination.

Mounting Options

- Standard aircraft cable suspension
- Compatible with open or drop ceilings
- Pre-cut slots for quick attachment
- Optional bracket kits for alternate install methods

Included with Order:

- Mounting hardware + labeled baffle sets
- Install instructions (PDF + CAD)
- Custom layout support (optional)



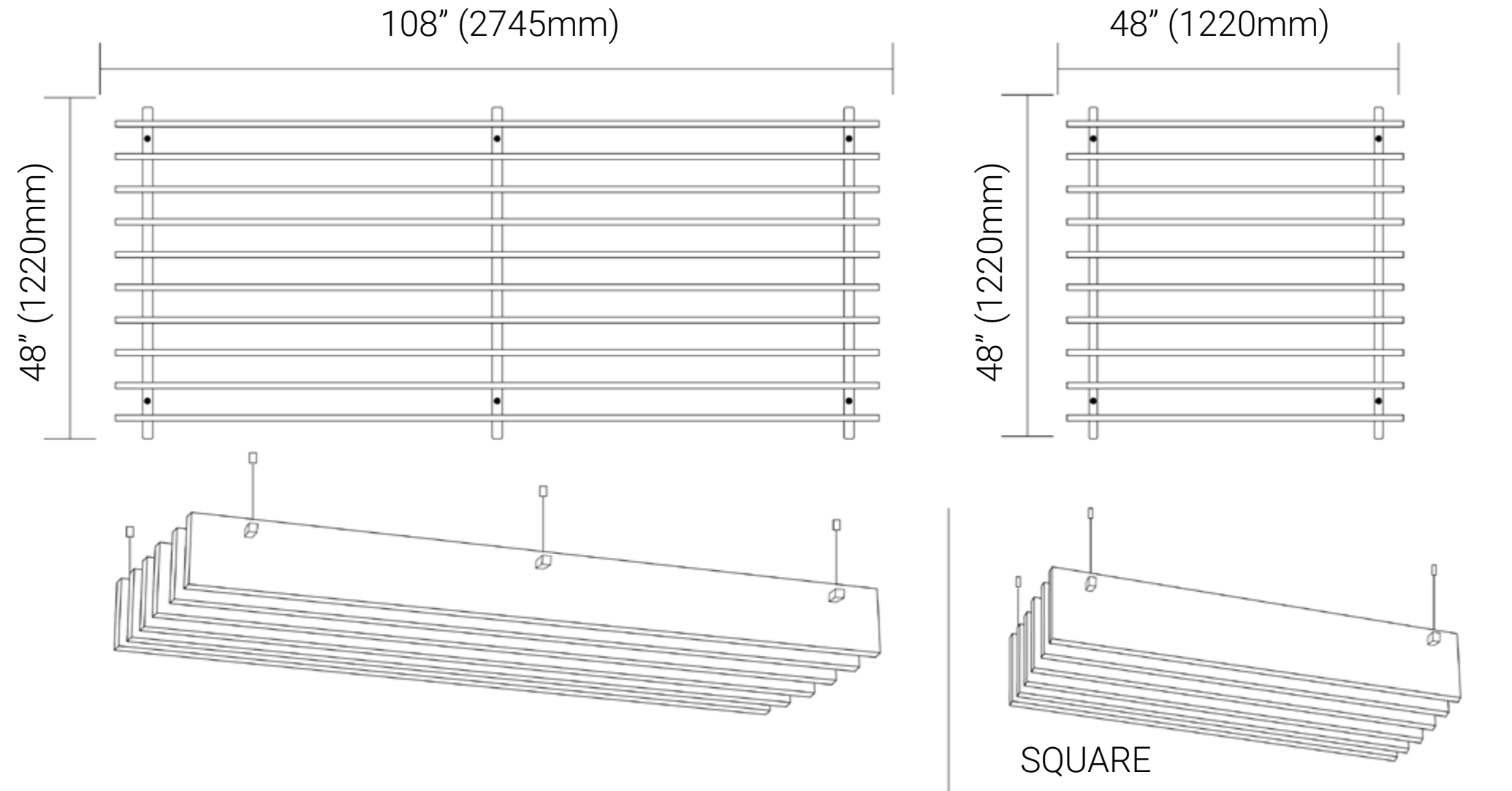
Mounting & Connections - Cable Freeform Suspension System

Tube Frame Blade Baffle System

ONNiT's Tube Frame Blade Baffle Systems provide a clean, durable suspension solution for architectural ceilings. Each baffle panel is mounted to a 1" x 1" square aluminum tube frame, suspended via aircraft cable kits and pre-drilled for ease of installation.

System Components

- 1" x 1" anodized aluminum square tube frame (silver finish)
- Pre-mounted PET felt baffles (9mm)
- Factory pre-drilled bolt-through baffle-to-frame connection
- Aircraft cable suspension kit with gripper, ceiling anchor, and leveling adjuster
- Optional: longer cables, or field-trimmed assemblies



Mounting & Connections - Cable Freeform Suspension System

Mounting Instructions

Step 1: Prepare Frame & Ceiling Anchor Points

- Confirm layout grid and drop locations per reflected ceiling plan (RCP)
- Pre-drill or locate ceiling anchor points to align with frame attachment locations
- Anchors must be rated for suspended loads

Step 2: Suspend Tube Frame

- Attach aircraft cables to ceiling structure with included anchors
- Slide cable through adjustable grippers pre-mounted on the frame
- Use integrated cable gripper to level the frame prior to final baffle installation

Step 3: Attach Baffles to Frame

- Align factory slots in PET baffles with pre-drilled bolt locations in tube frame
- Insert hardware bolts (supplied) through baffle and into frame; secure with nylon locking nuts
- Ensure equal spacing and consistent baffle orientation across entire system

Step 4: Final Leveling and Clean-Up

- Adjust grippers for final height alignment
 - Confirm all bolts and cable terminations are secure
- Wipe down frame and baffles with microfiber cloth

Recommended Spacing

- Baffles typically spaced 4", 6", 8", or 12" on center depending on acoustic and visual goals
- Contact ONNiT for layout recommendations based on your space and NRC performance targets

Material & Finishes

- **Tube Frame Finish:** Anodized Clear Silver
- **Panel Colors:** Full ONNiT felt palette available; multi-color installations supported
- **PET Panel Thickness:** 9mm

Included Hardware

- Tube frame with pre-drilled holes
- Aircraft cable suspension kit (5' standard length)
- Bolt and nut sets for baffle-to-frame installation

Notes

- All baffles ship pre-cut and labeled for fast field assembly
- Longer cable kits and multi-color configurations available by request
- Custom sizing available (e.g., 48" x 48", 48" x 108", 108" x 108")

Dimensions and Specifications

| ATTRIBUTE | DETAIL |
|----------------|--|
| Dimensions | Custom lengths; typical: 48" L x 6" H x 1" W (1220mm x 100mm x 25mm) per blade |
| Material | Rigid PET felt, 9mm or 12mm thickness |
| Finish Options | ONNiT Standard Color Palette |
| Mounting | Aircraft cable suspension system |
| Weight | Approx. 1.1 lb per sq. ft. |
| NRC Rating | Up to 1.00 (configuration dependent) |
| Fire Rating | ASTM E84 Class A |
| Sustainability | 60%+ recycled content, recyclable |



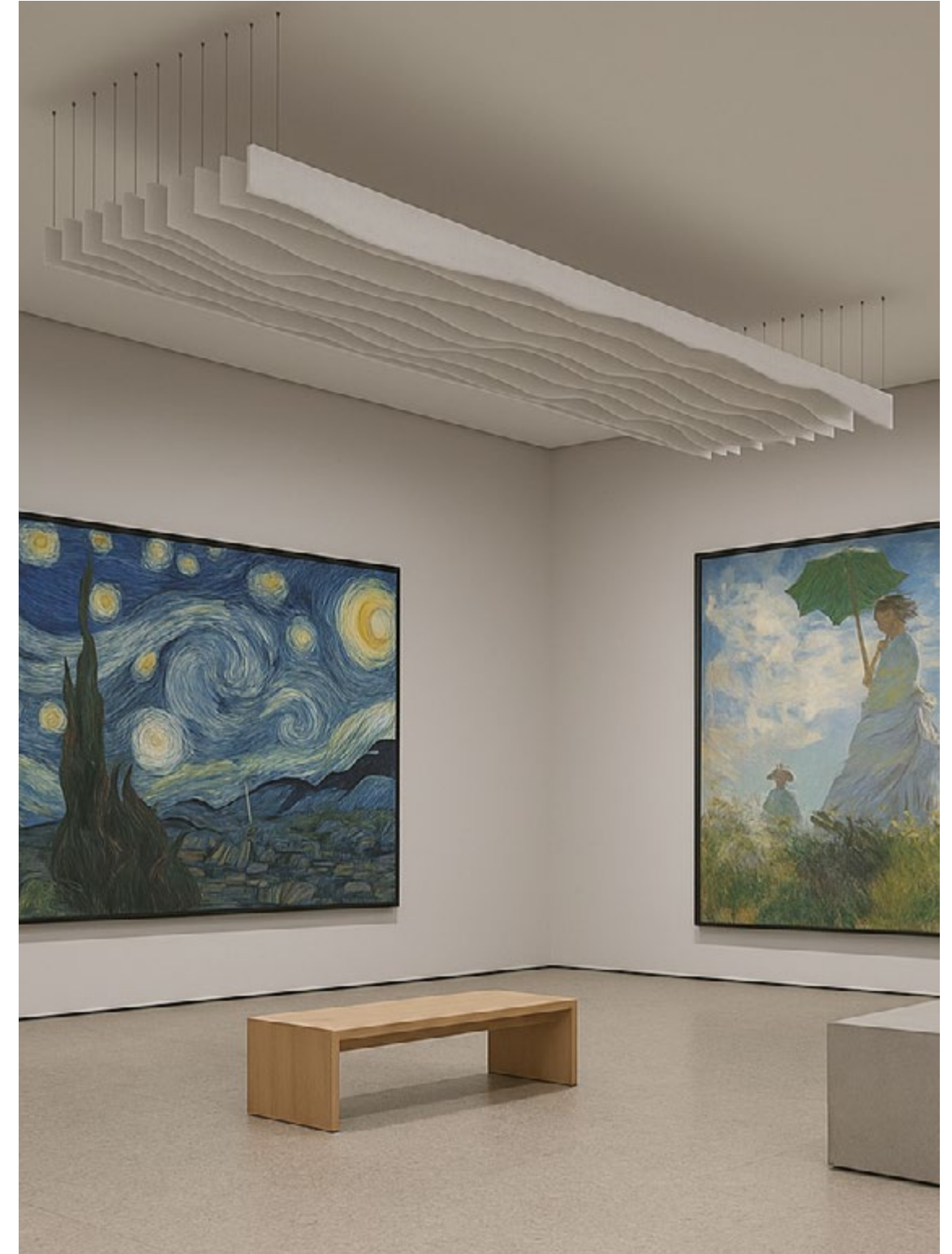
Use Cases



Open office spaces



Restaurants and lounges



Art galleries and museums



Hotel lobbies and
upscale retail

Color That Flows With Your Design

Cascade™ blade baffles come in 32 curated colors that accentuate their vertical form and fluid movement. Choose from muted neutrals to bold accents for your ideal interior look.



Need Something More Specific? Custom color matching and expanded palette options are available upon request.
Let Color Complete The Form - And Your Vision

Sustainability + Compliance

- 60%+ recycled PET, fully recyclable content
- Made from Low-VOC, formaldehyde-free
- Made with OEKO-TEX® and GRS certified materials
- Eligible for LEED MR and EQ credits



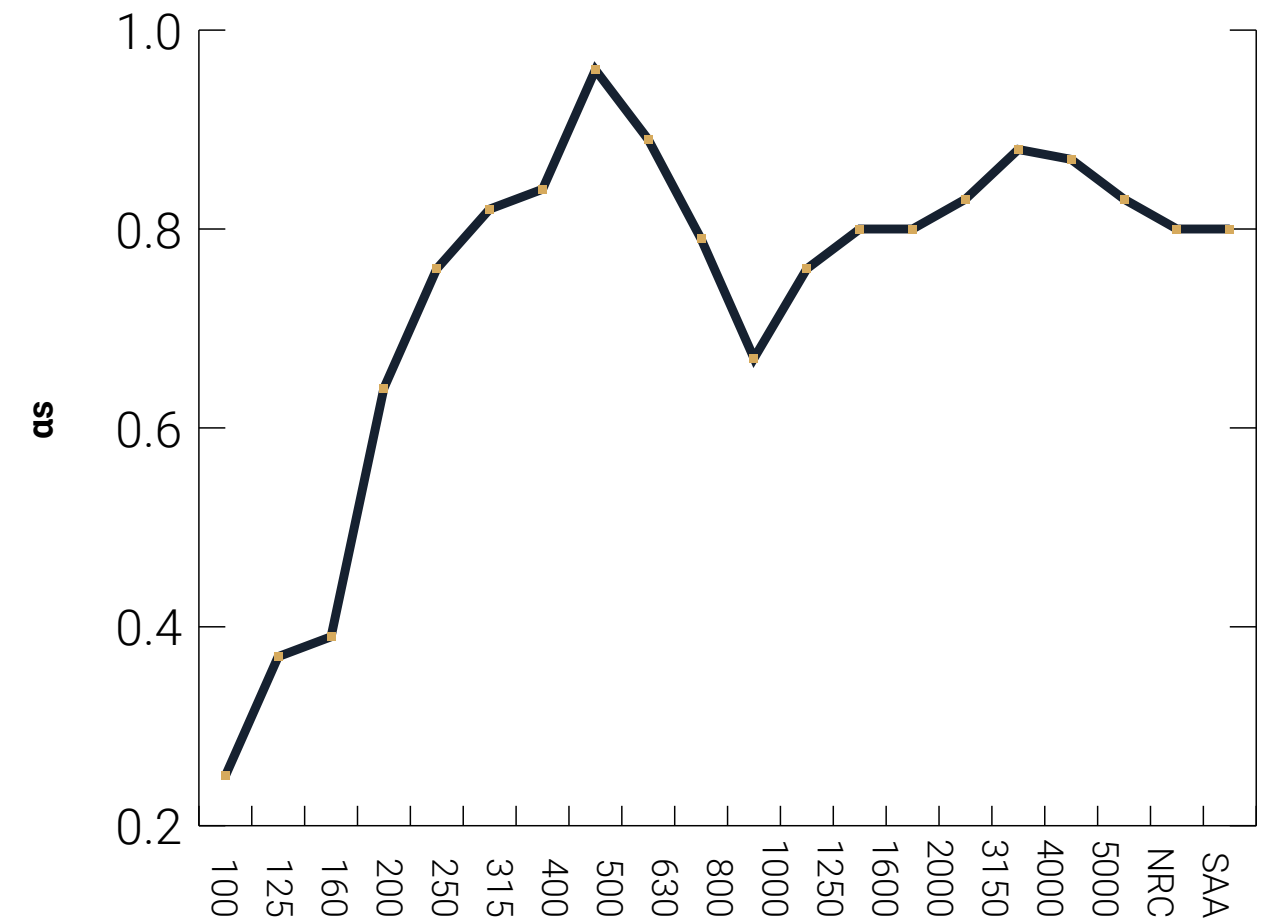
Acoustic Testing Data

| Volume of the reverberation room | Vs, m3 | 240 | Installation Type: | E200 |
|----------------------------------|--------|-----|--------------------|------|
| Room temperature | t1, °C | 13 | t2, °C | 13 |
| Relative humidity of test rooms | H1, % | 70 | H2, % | 70 |

Sample description:

| | | | |
|--------------------------------|-----------|-------------------------|------|
| Sample Size (width*length), mm | 1220*2440 | Thickness, mm | 9.0 |
| Edge treatment | / | Mass, kg/m ² | 2.05 |
| Test Area, m ² | 10.8 | | |

| Frequency (Hz) | α_s |
|----------------|------------|
| 100 | 0.25 |
| 125 | 0.37 |
| 160 | 0.39 |
| 200 | 0.64 |
| 250 | 0.76 |
| 315 | 0.82 |
| 400 | 0.84 |
| 500 | 0.96 |
| 630 | 0.89 |
| 800 | 0.79 |
| 1000 | 0.67 |
| 1250 | 0.76 |
| 1600 | 0.80 |
| 2000 | 0.80 |
| 2500 | 0.83 |
| 3150 | 0.88 |
| 4000 | 0.87 |
| 5000 | 0.83 |
| NRC | 0.80 |
| SAA | 0.80 |



intertek
Total Quality. Assured.



info@onnitsystems.com

(801) 619-7044



*Visit our online form and
configuration system*