



ShowVault™

Built-In Display Case Series





ShowVault™ Pivot and Sliding Door Display Case

Secure. Elegant. Accessible.

ShowVault™ Pivot Door display cases are built-in architectural showcases engineered for high-traffic environments where visibility, security, and design all matter. Featuring a full-framed aluminum body and pivoting tempered glass doors, these cases offer front-facing access without sacrificing the clean, streamlined look. Whether recessed into a single wall or installed as a double-sided room divider, ShowVault™ offers unmatched flexibility with premium finishes and acoustic PET felt backing to reduce glare and echo.





Key Features

- Fully built-in case designed for flush wall integration
- Pivoting tempered glass door(s) with locking hardware
- Aluminum frame construction with clear or custom anodized finish
- Optional double-sided viewing window through shared wall
- Integrated 9mm PET felt backer for acoustic performance
- Cable or bracket-mounted 3/8" tempered glass shelves
- Ready for LED lighting integration (lighting by others)

Dimensions

ATTRIBUTE	DETAIL
Standard Depth	18"
Height & Width	Field verified; widths vary by unit configuration
Glass Thickness	Shelves: 3/8"
	Doors: 1/4"

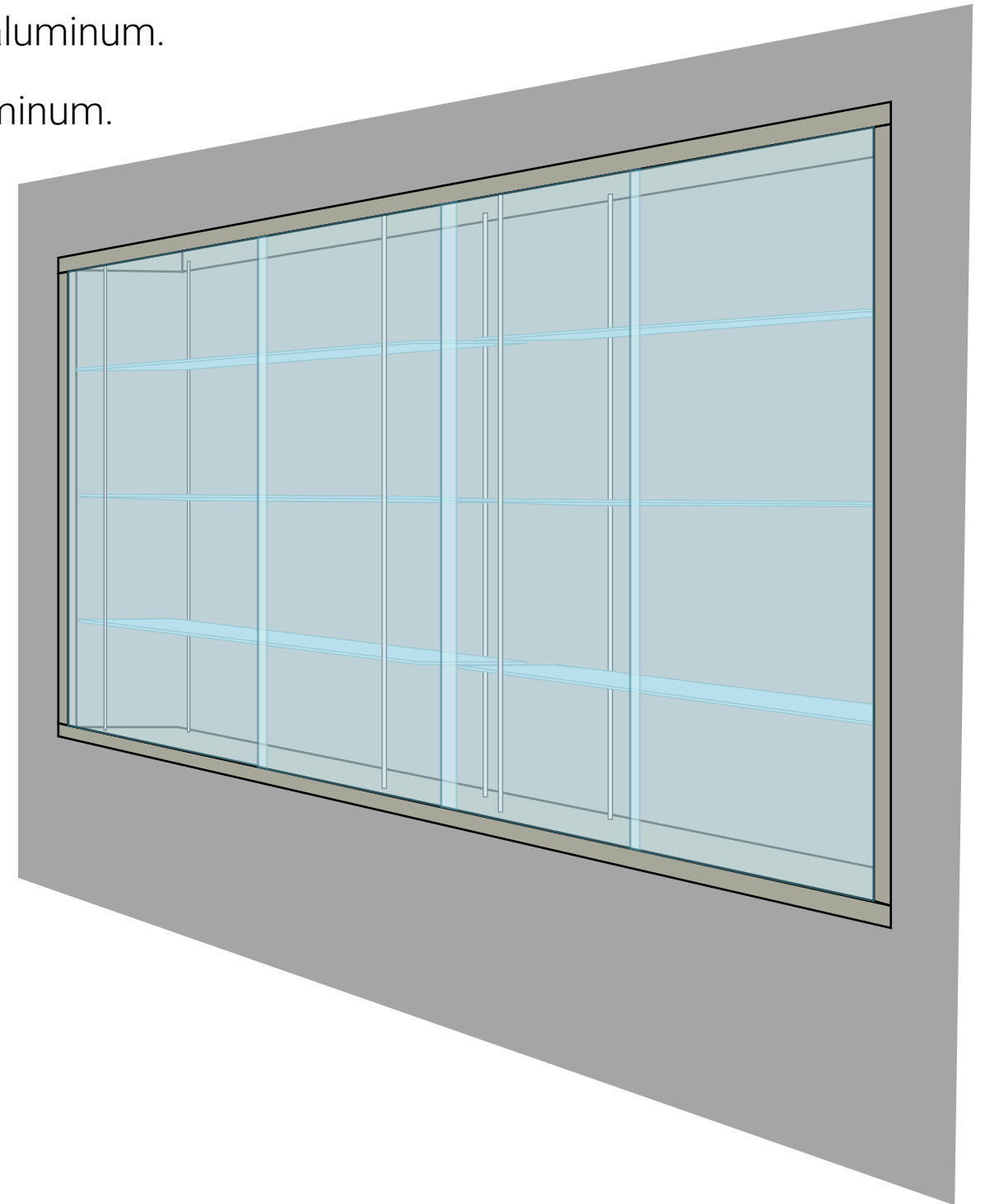
Specifications

ATTRIBUTE	DETAIL
Frame System	Full-frame anodized aluminum enclosure, recessed mounting
Doors	Sliding or Pivoting tempered glass, polished edge, full swing or restricted angle
Glass	1/4" tempered safety glass, ANSI Z97.1 / CPSC Cat II compliant
Track	1 3/16" x 1/2" aluminum track (Stylmark #110178)
Shelves	3/8" tempered glass suspended via 1/16" cables or mounted brackets
Back Panel	9mm PET Felt (standard in Black or custom ONNiT colors)
Locking System	Keyed cam lock or push-button lock (concealed)
Finish	Satin Clear Anodized
Lighting	Fixture-ready cavity (LED by others; electrical contractor required)

Sliding Doors System Specifications

Mounting Systems:

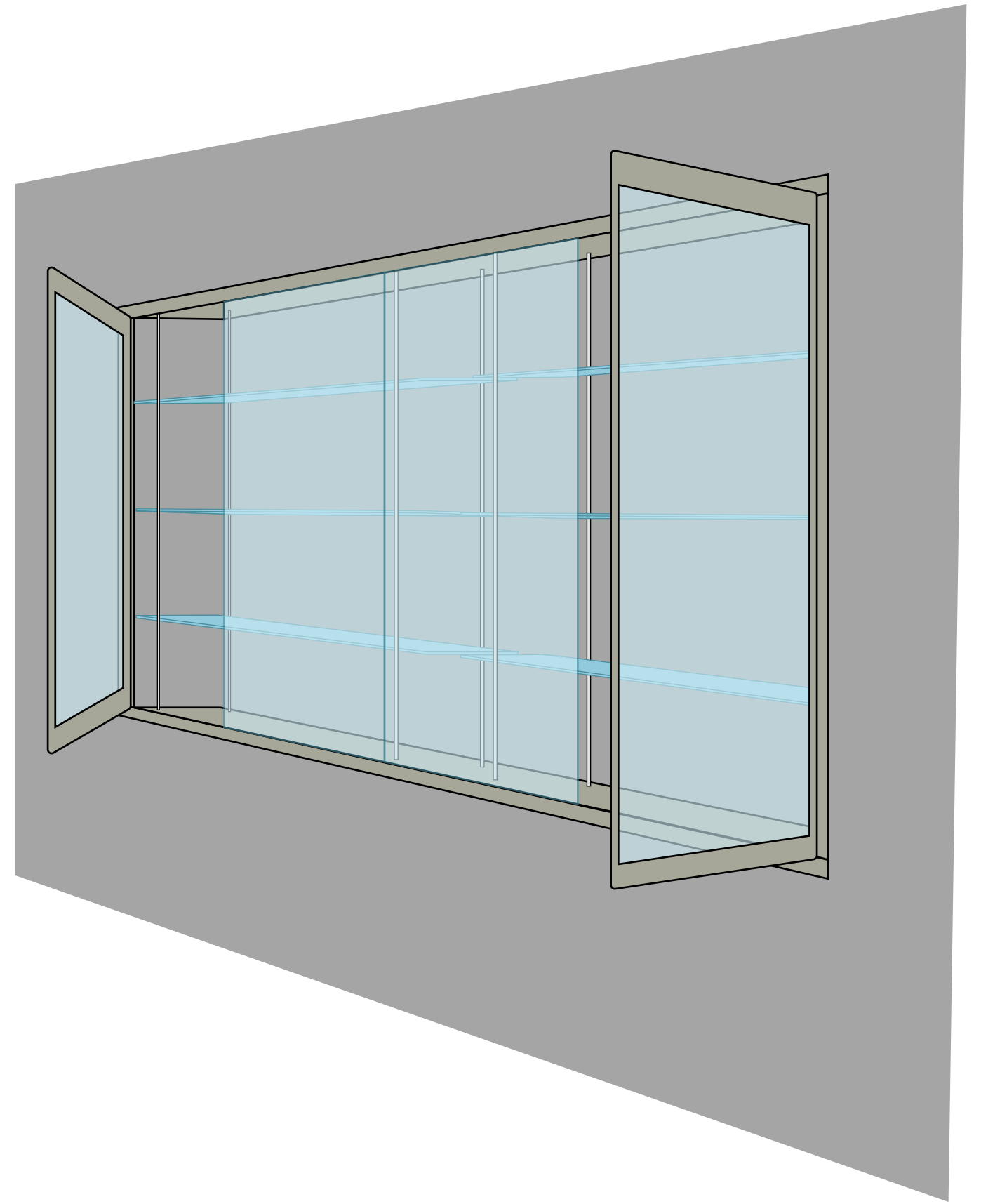
- Top Channel (110008): 1 3/16 inch by 13/16 inch (30 m by 20.6 mm) aluminum.
- Top Moulding (110024): 7/16 inch by 3/8 inch (11 mm by 10 mm) aluminum.
- Retainers (410381): 3/4 inch (19 mm) security door retainer.
- Wheel Assembly (510041): Heavy duty wheel assembly.
- Lock (510808): Chrome K-41 plunger lock assembly.



Pivot Door System Specifications

Mounting Systems:

- Glass: 3/8" tempered glass doors with polished edges
- Top Pivot: CRL #1NT401
- Bottom Pivot: CRL #1NT403
- Top Rail: CRL #DR4SSA38A
- Bottom Rail: CRL #DR4SSA38SL
- Door Lock: CRL #DRA1020SA



SHELVING SYSTEM SPECIFICATIONS

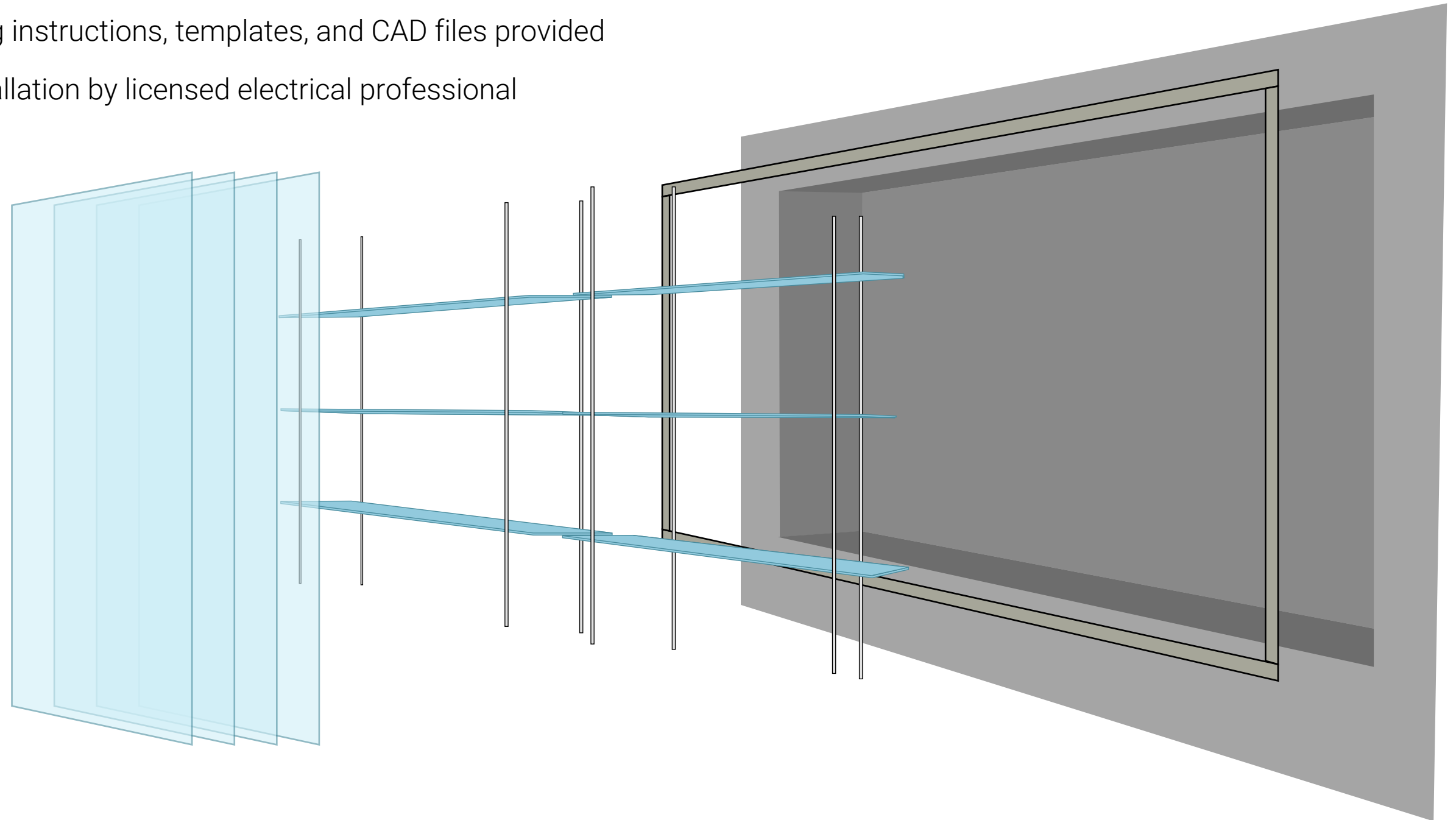
KV 82/182 Adjustable Shelf Bracket System:

- Shelves: 3/8" tempered glass with polished edges
- Depth: 16" standard
- Brackets: KV182 14.5" L shelf brackets
- Standards: KV82 vertical adjustable wall standards (color to be architect-specified).
- Standards exposed 0.20" above PET felt panel
- Capacity: Rated for commercial weight capacity



Installation Instructions

- Delivered partially assembled for field integration
- Field-prepped opening must be plumb, square, and reinforced
- Shelves and doors installed on-site
- Mounting instructions, templates, and CAD files provided
- LED installation by licensed electrical professional





Available Options

Mounting Systems:

- Cable Shelf System
- Standard Bracket Shelf System

Door Configuration:

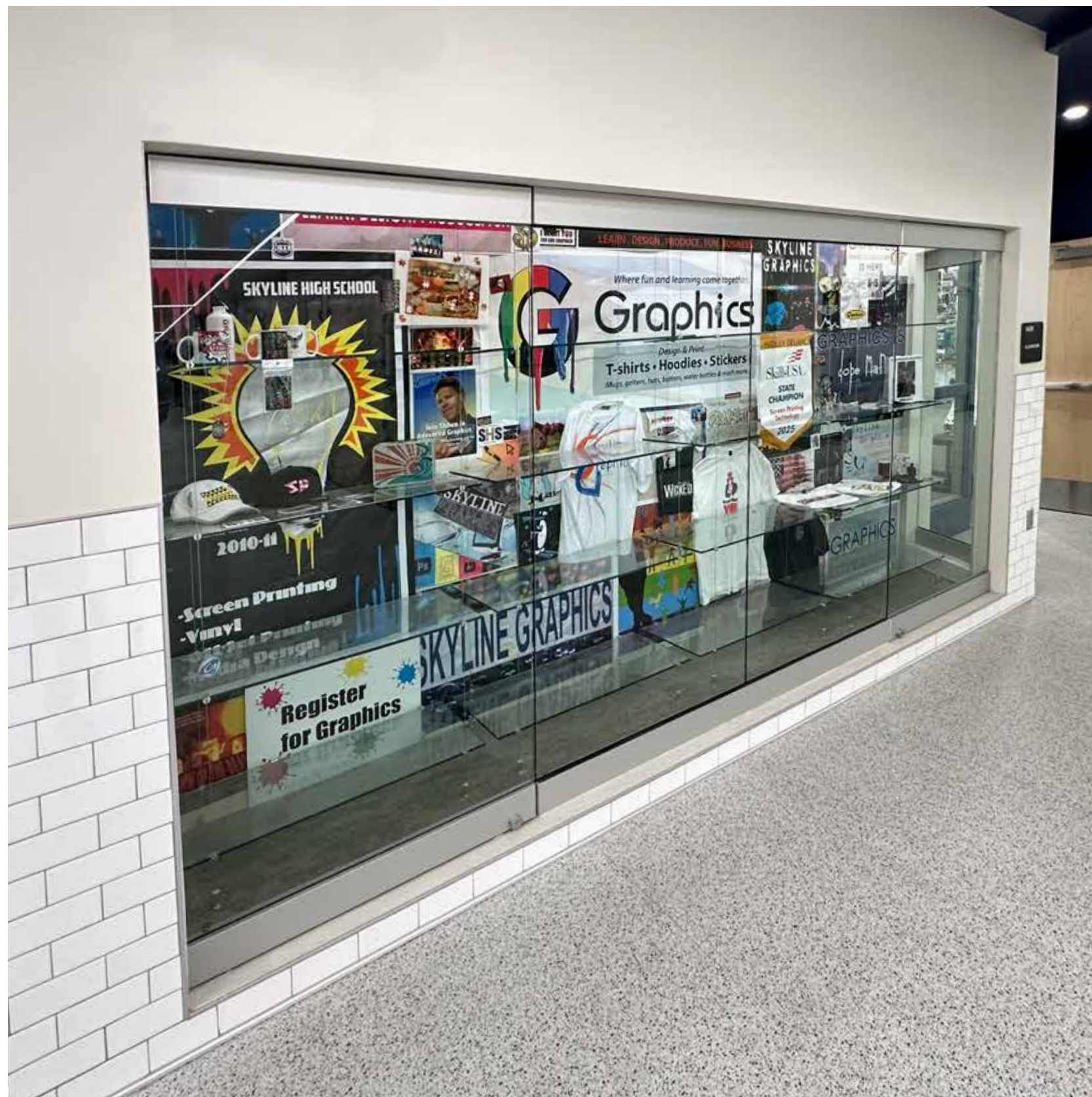
- Pivot
- Sliding
- Single-sided access
- Double-sided wall view (see architectural details for framing)

Finishes:

- Clear anodized (standard)

Security Options:

- Concealed lock
- Tamper-resistant hinges
- Optional glass film for privacy or glare reduction



Sustainability + Compliance

- Made from 75%+ post-consumer recycled PET
- Made with Certified OEKO-TEX® and Global Recycled Standard (GRS) materials
- Formaldehyde-free and low VOC
- Moisture, mold and mildew resistant
- Contributes to LEED MR and EQ credits





info@onnitsystems.com

(801) 619-7044



*Visit our online form and
configuration system*