



HonorView™

Wall Mount Display Case





HonorView™

Wall Display Case Series

The HonorView™ Wall Mount Display Case is a refined, wall-mounted solution designed to elevate the presentation of awards, achievements, and memorabilia. Engineered with a bold aluminum frame and crystal-clear tempered glass panels, HonorView™ showcases contents with clean architectural precision. Suspended glass shelving and a sound-absorbing PET felt backer combine to create a display that is both visually striking and acoustically mindful. Ideal for schools, athletic facilities, offices, and public buildings, HonorView™ is the premium choice for honoring excellence.



Key Features

- Sleek 3-sided tempered glass enclosure with anodized aluminum frame
- Sliding glass door system with secure lock
- Suspended 3/8" tempered glass shelves supported by tension cables
- Integrated PET Felt Sound-Tack panel for acoustic absorption and visual contrast
- Multiple mounting configurations available
- Designed for clean lines, easy installation, and low maintenance

Dimensions

ATTRIBUTE	DETAIL
Standard Depth	18"
Height & Width	96" W X 66" H
Glass Thickness	Shelves: 3/8"
	Doors: 1/4"

Available Options

Mounting Systems:

- Cable Shelf System (Most Recommended)
- Standard Bracket Shelf System

Sound-Tack Color Options:

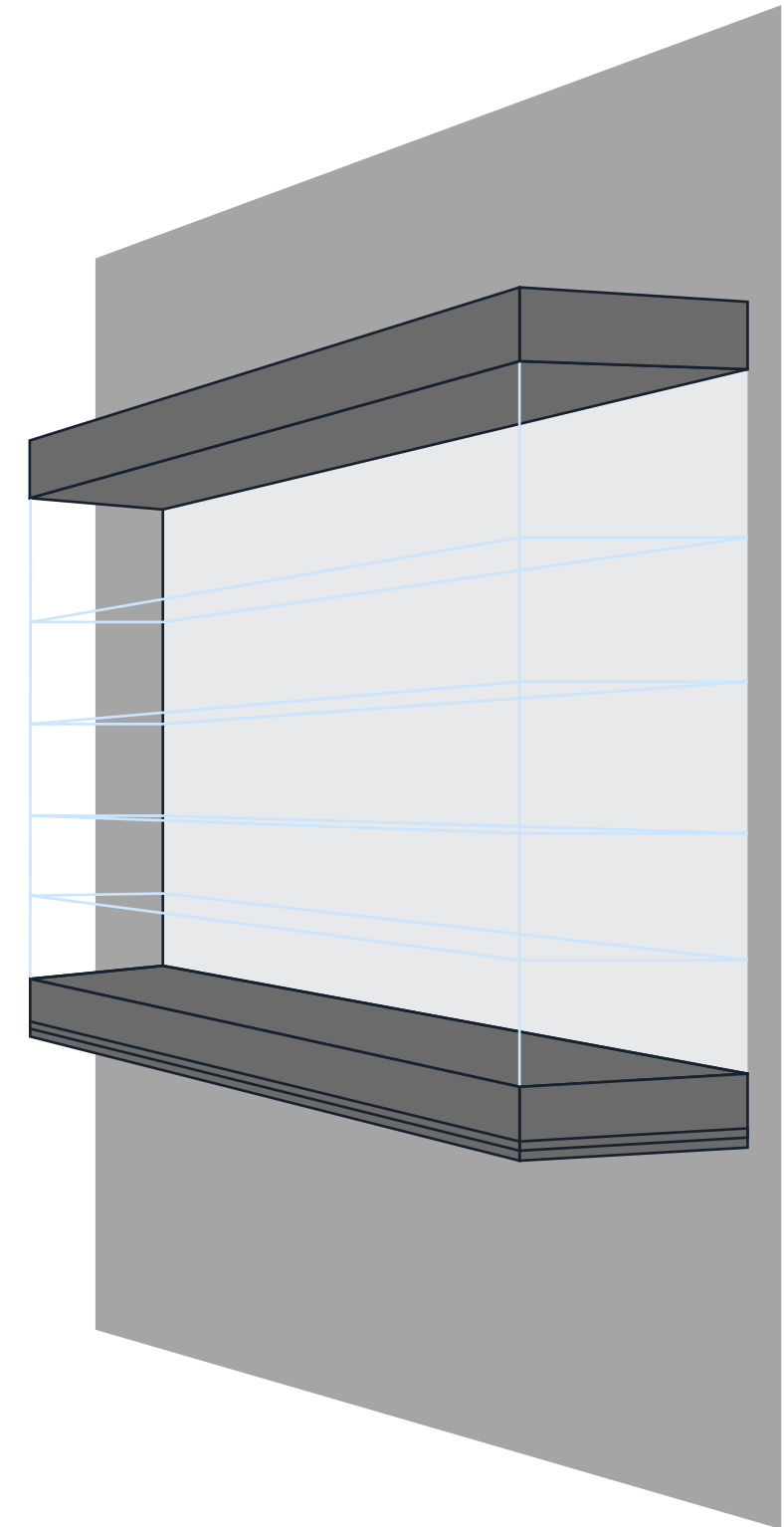
- Black PET Felt (standard)
- Full ONNiT color palette upon request

Security Add-ons:

- Door retainers
- Concealed lock access

Finish Customization:

- Anodized Aluminum



Specifications

ATTRIBUTE	DETAIL
Frame System	1 3/16" x 13/16" aluminum top channel (Stylmark #110008)
Doors	Sliding tempered glass with polished edges and routed finger pulls
Glass	1/4" tempered safety glass, ANSI Z97.1 & CPSC Cat II compliant
Track	1 3/16" x 1/2" aluminum track (Stylmark #110178)
Shelves	3/8" tempered glass, suspended via 1/16" steel cables with tensioners
Sound-Tack Panel	9mm PET Felt (Black standard; full color palette available)
Locking System	Chrome K-41 plunger lock with concealed hardware
Finish	Satin Clear Anodized
Lighting	Fixture-ready header cavity (LEDs by others)

Installation Layout & Quantity

Step 1: Installation Layout & Quantity

- Single or multiple bays depending on space

Step 2: Spacing & Orientation

- Modular side-by-side alignment for gallery or corridor installation

Step 3: Mounting Preferences

- Lag bolt wall mounting

Step 4: Color Selection & Finish Direction

- PET Felt color can match or contrast displayed items
- Aluminum frame available in satin

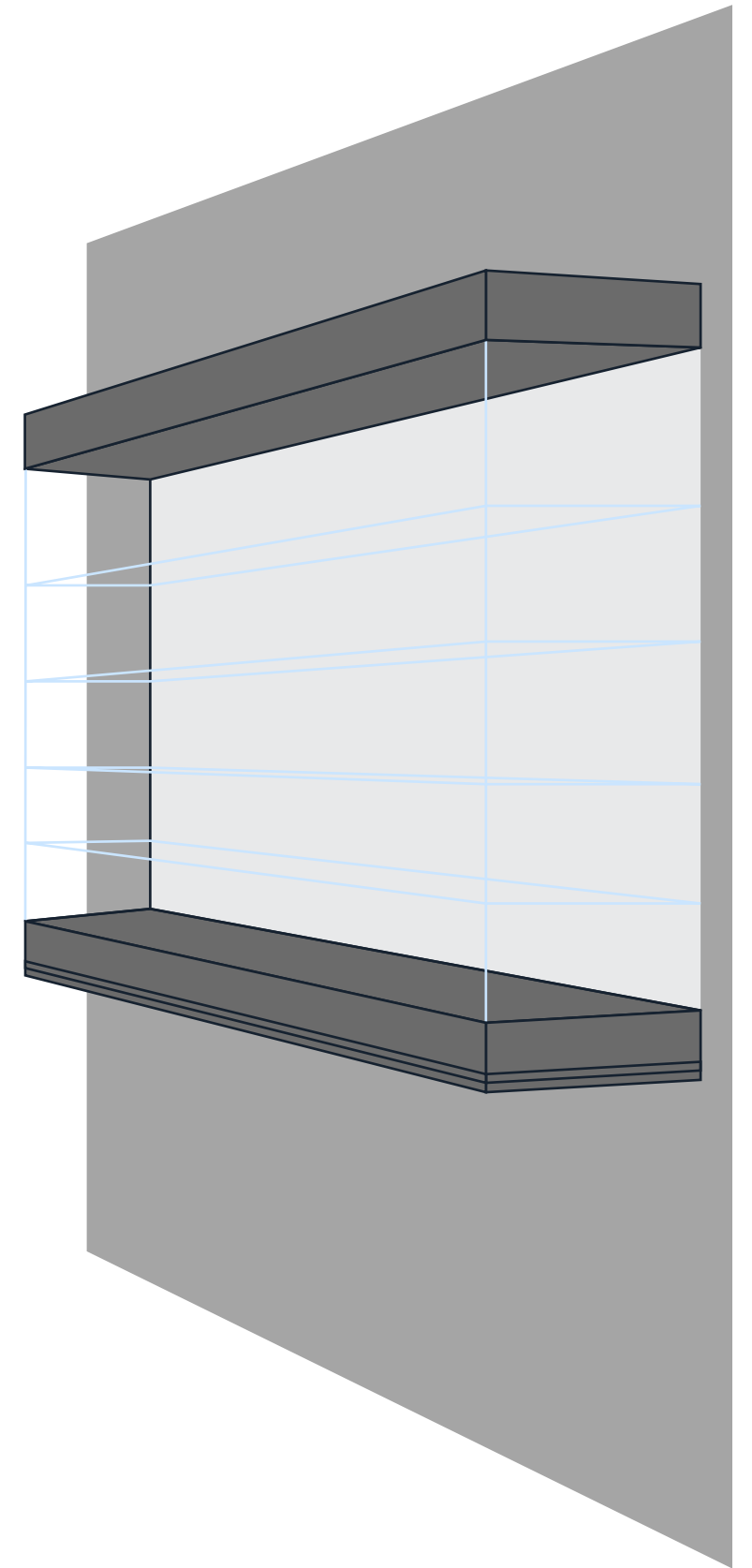


Optional Tip: Share a photo, sketch, or architectural elevation—we'll help visualize the layout.

Installation Instructions

Orientation Ideas:

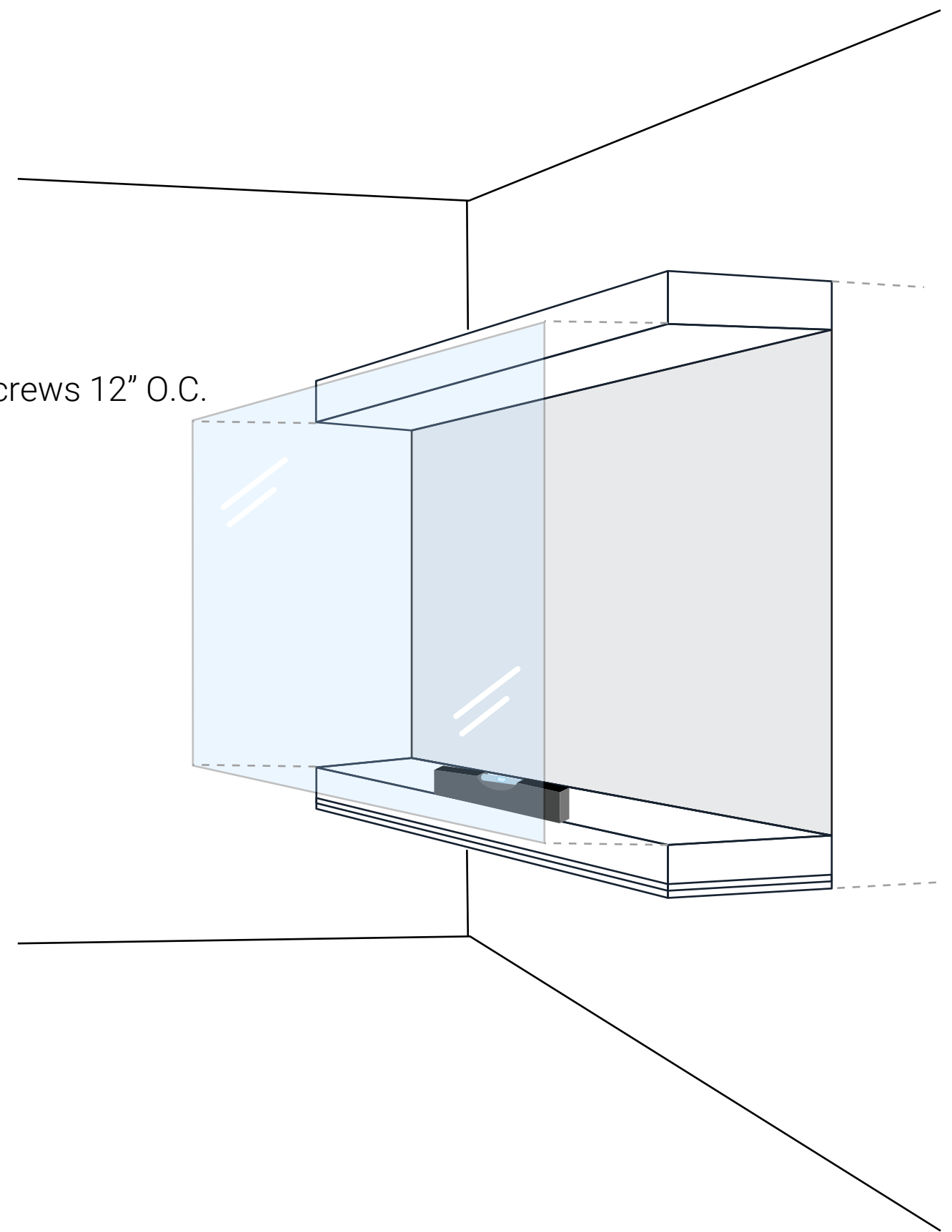
- Mount using provided cleats and anchor systems
- Shelves and tension cables install post-mount
- Final adjustment of glass and door track on site
- LED lighting installed by licensed electrician (if applicable)

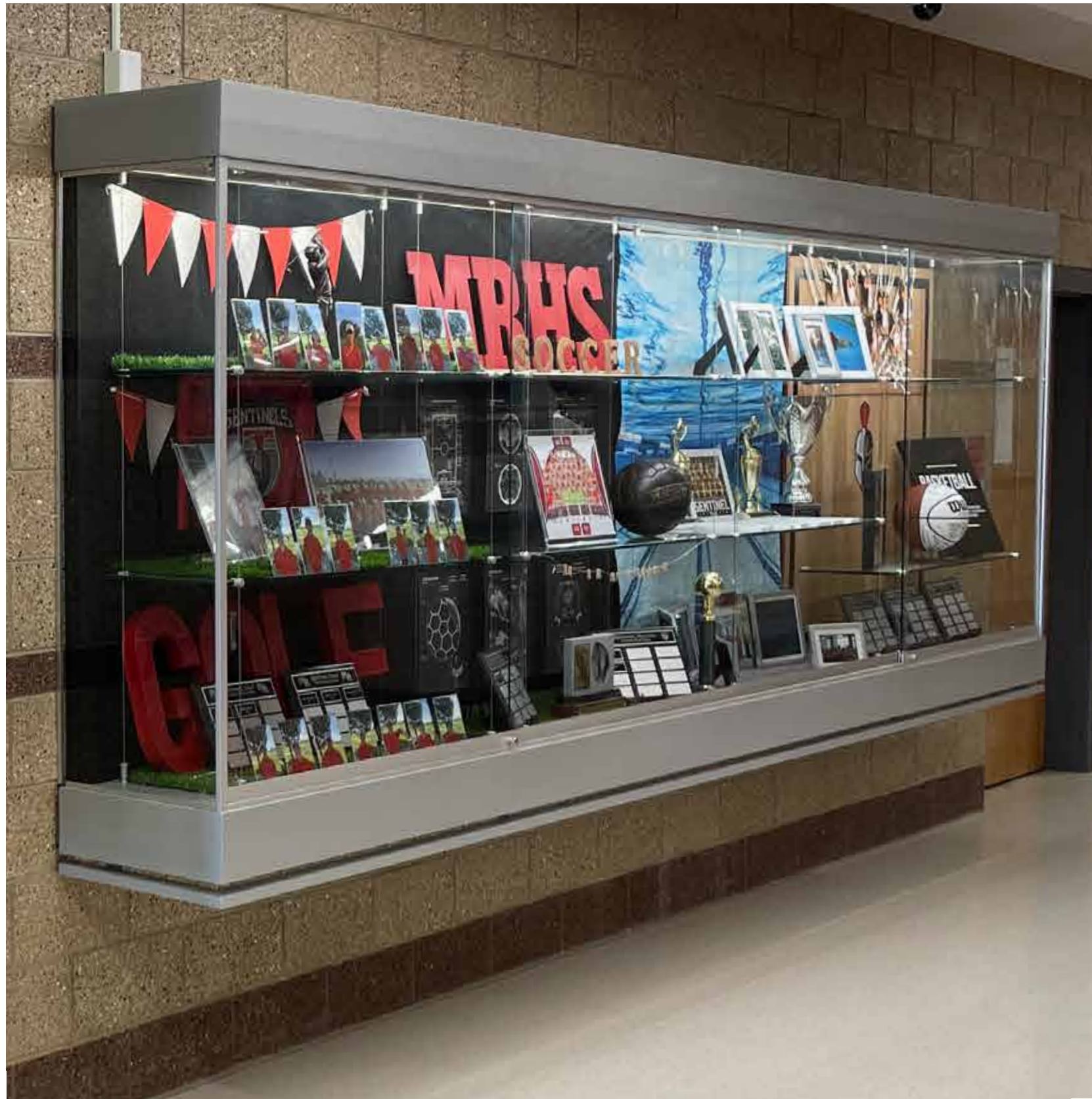


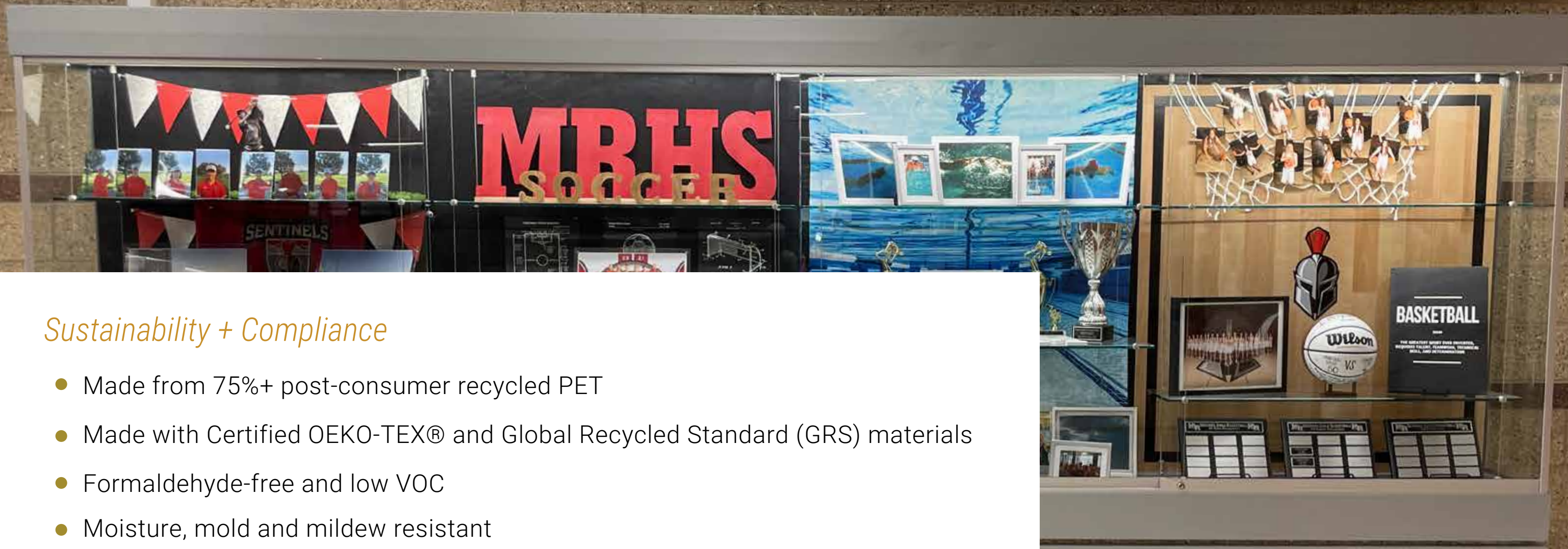
Installation & Mounting

Quick Install

- Locate and mark display case height, ensure level.
- Assemble 91"W x 66"H plywood base; secure with adhesive and screws 12" O.C.
- Mount base to wall with tapcons (use 2 installers).
- Install lower frame first, then upper frame with 54" spacers.
- Insert laminate floor/ceiling, felt panels, and cables.
- Install side glass, shelf grips, shelves, and doors.







Sustainability + Compliance

- Made from 75%+ post-consumer recycled PET
- Made with Certified OEKO-TEX® and Global Recycled Standard (GRS) materials
- Formaldehyde-free and low VOC
- Moisture, mold and mildew resistant
- Contributes to LEED MR and EQ credits



Acoustic Testing Data

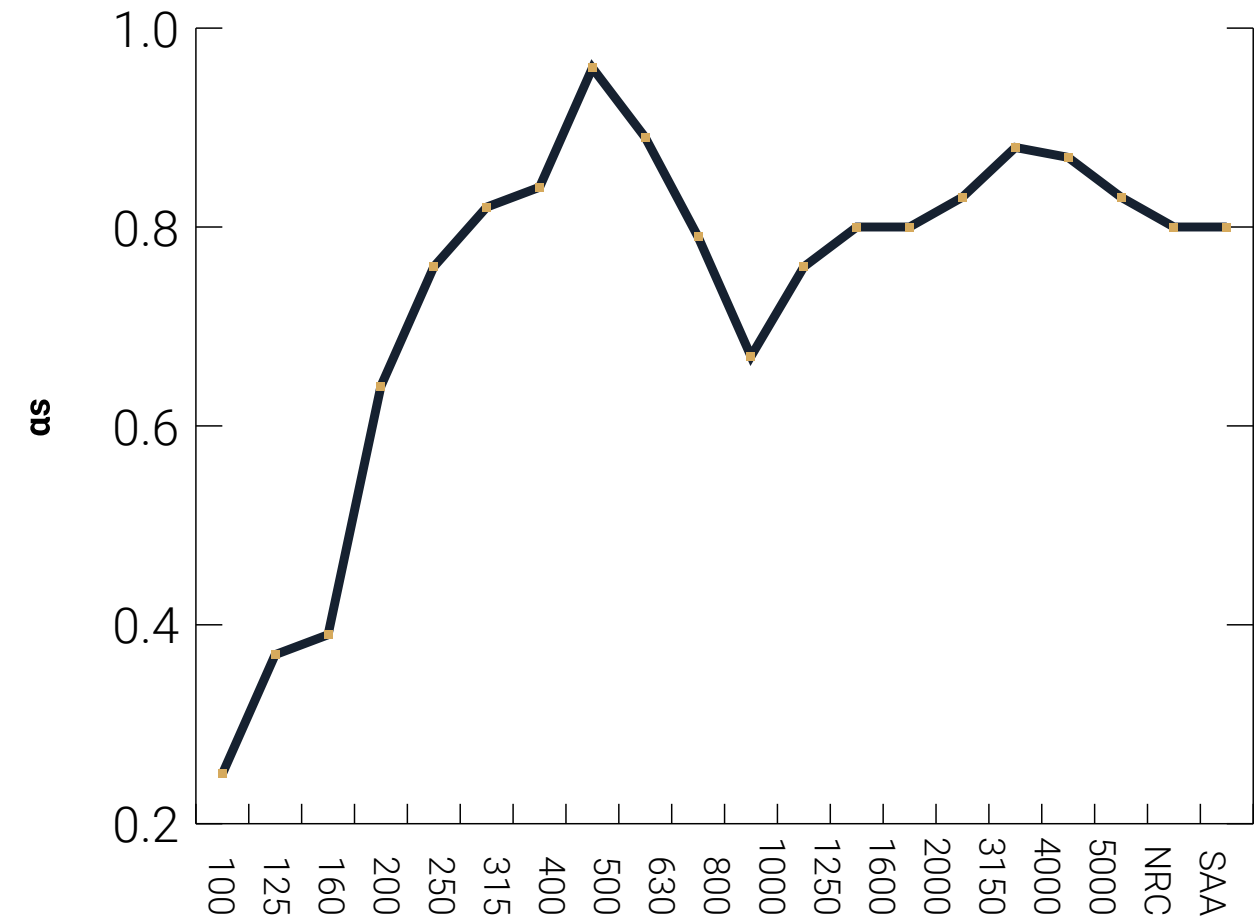
Volume of the reverberation room	Vs, m3	240	Installation Type:	E200
Room temperature	t1, °C	13	t2, °C	13
Relative humidity of test rooms	H1, %	70	H2, %	70

Sample description:

Sample Size (width*length), mm	1220*2440	Thickness, mm	9.0
Edge treatment	/	Mass, kg/m ²	2.05
Test Area, m ²	10.8		

intertek
Total Quality. Assured.

Frequency (Hz)	αs
100	0.25
125	0.37
160	0.39
200	0.64
250	0.76
315	0.82
400	0.84
500	0.96
630	0.89
800	0.79
1000	0.67
1250	0.76
1600	0.80
2000	0.80
2500	0.83
3150	0.88
4000	0.87
5000	0.83
NRC	0.80
SAA	0.80





info@onnitsystems.com

(801) 619-7044



*Visit our online form and
configuration system*