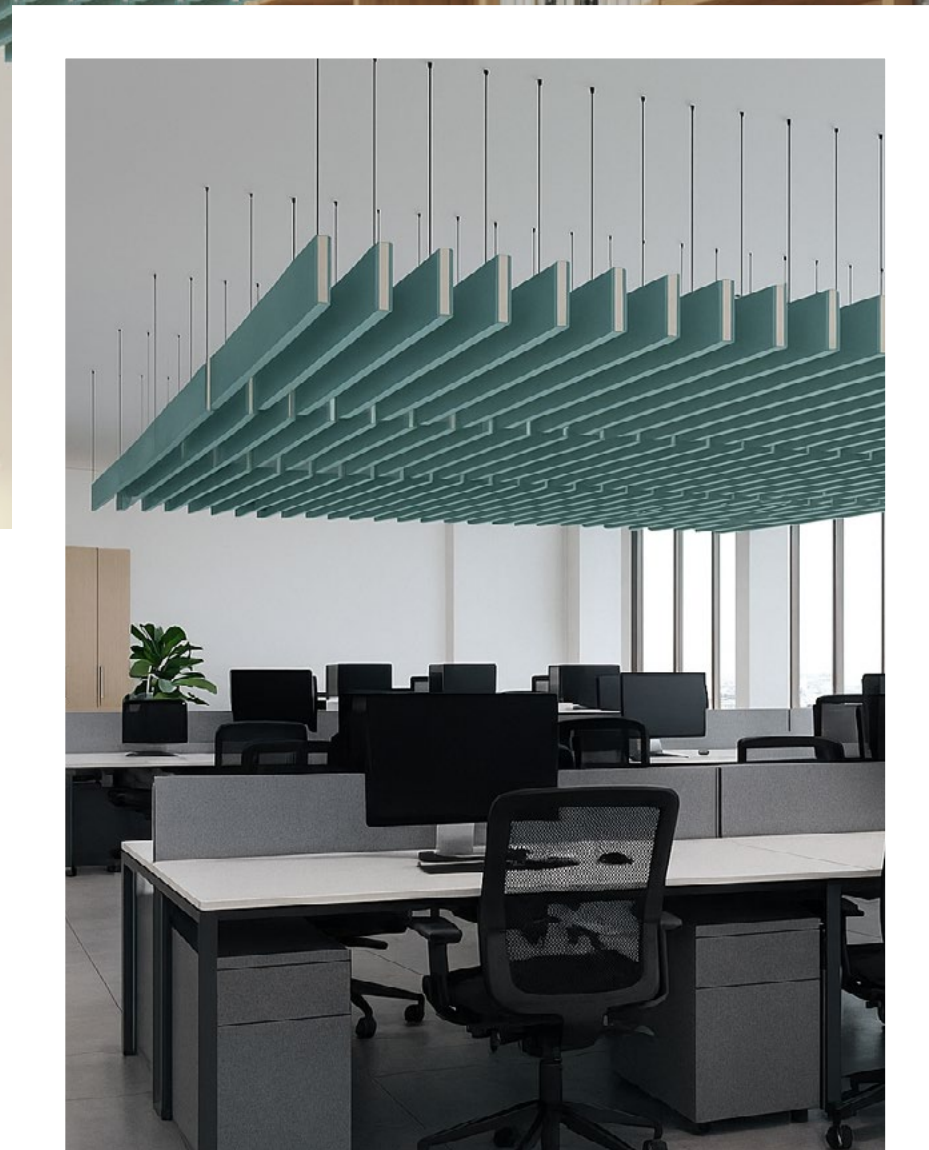




Folio™

Book Baffle Series





Folio™

Minimal Form. Maximum Control.

Folio™ book baffles offer a clean, minimalist silhouette inspired by the elegance of a closed book. Inverting the form of Bound™, Folio™ maintains the same powerful acoustic performance in a refined, structured profile that introduces visual balance and calm to any ceiling. Constructed from precision-cut PET felt, these baffles elevate interiors with clarity and cohesion—ideal for modern spaces that value both form and function.

Key Features

- Distinctive block-style book baffle design
- Enhances acoustics with NRC rating up to 1.00
- Creates architectural rhythm and structured visual impact
- Available in multiple standard and custom colors
- Modular design for scalable, repeated layouts
- Suspended with adjustable aircraft cable system
- ASTM E84 Class A fire rating
- Made from 75% recycled PET felt and fully recyclable



Clarity in Form. Quiet in Space.

Folio™'s minimalist, inverted design adds subtle geometry to ceilings, balancing clean lines with acoustic intent. Whether arranged in linear series or dynamic patterns, Folio™ helps define zones while softening sound in high-traffic areas.

Work With Us

ONNiT's design team helps configure layouts that optimize both visual flow and acoustic control—factoring in ceiling height, spacing, room type, and aesthetics.

Already Have a Concept?

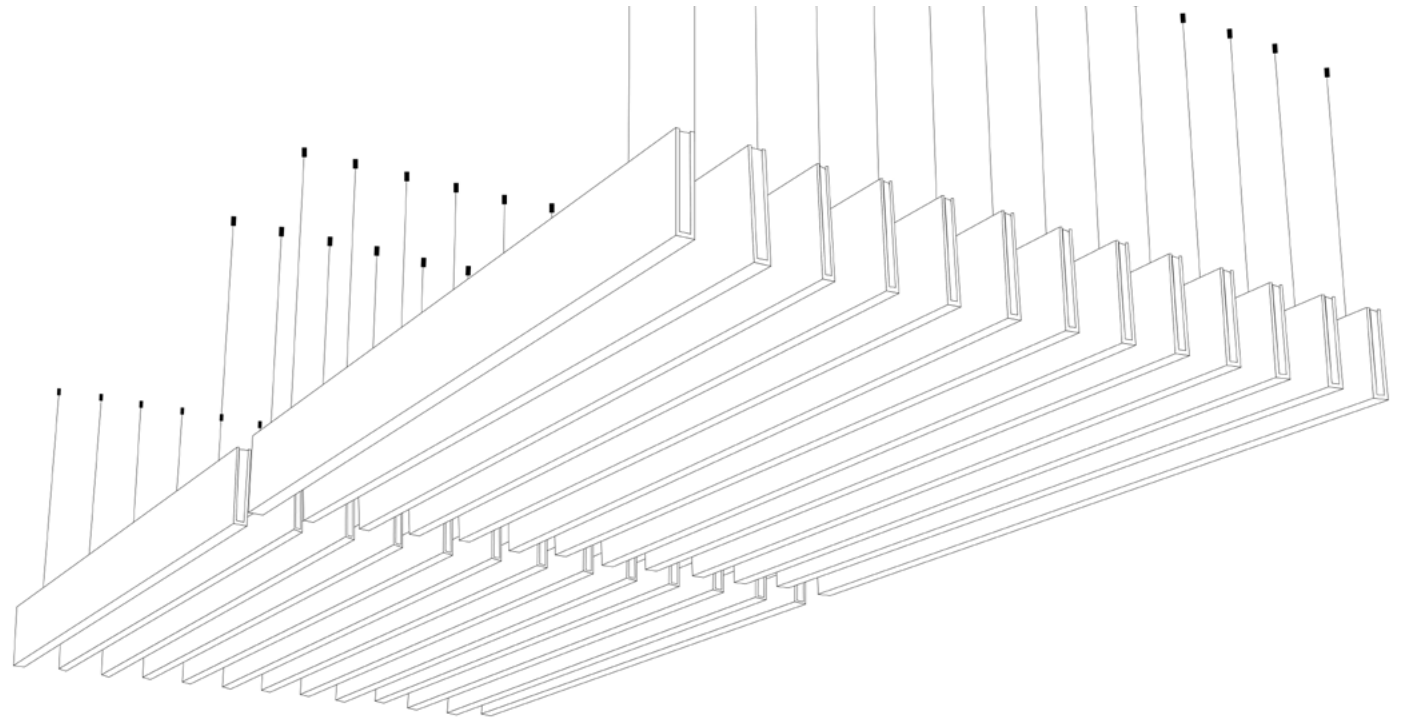
We can take your sketches or inspiration boards and deliver detailed plans, product specs, and finish options tailored to your space.

What to Provide:

- Room dimensions and ceiling height
- Desired acoustic coverage and number of units
- Lighting, sprinkler, and HVAC placement
- Preferred color and finish palette

Spacing Guidance:

- **Tight Spacing:** Bold rhythm and maximum coverage
- **Moderate (6–12"):** Balanced performance with lightness
- **Wide Spacing (12"+):** Minimalist, gallery-like presence



Mounting & Connections - Clean and Adaptable

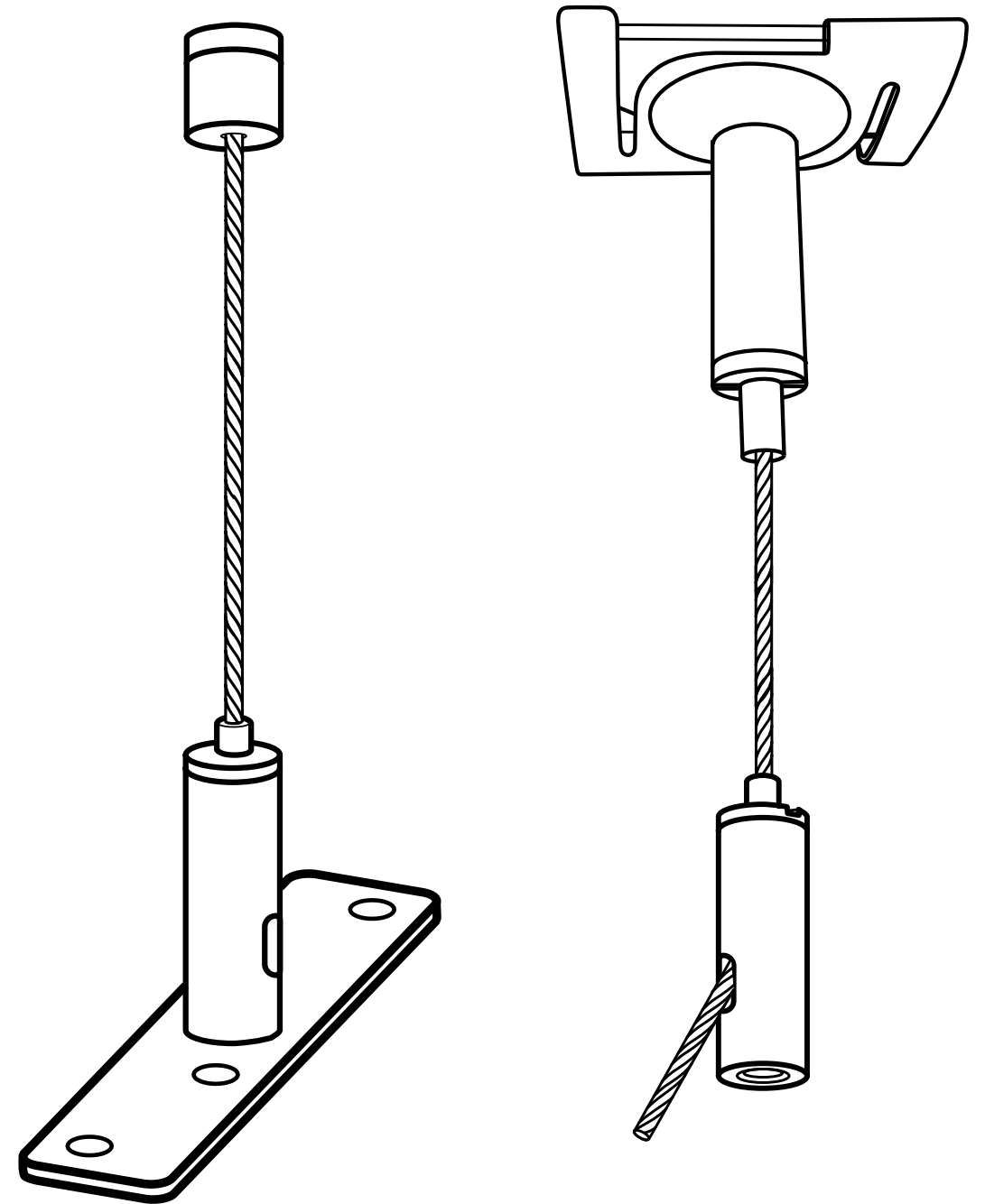
Folio™ installs seamlessly with a simple, refined suspension method designed for fast alignment and a floating visual.

Mounting Options

- Aircraft cable system with adjustable height
- Compatible with open ceilings or T-grids
- Pre-labeled cable kits for fast install
- Discreet hardware keeps focus on form

Installation Notes:

- Suitable for singular or multi-unit installations
- Installation guides available
- Lightweight components for easy handling



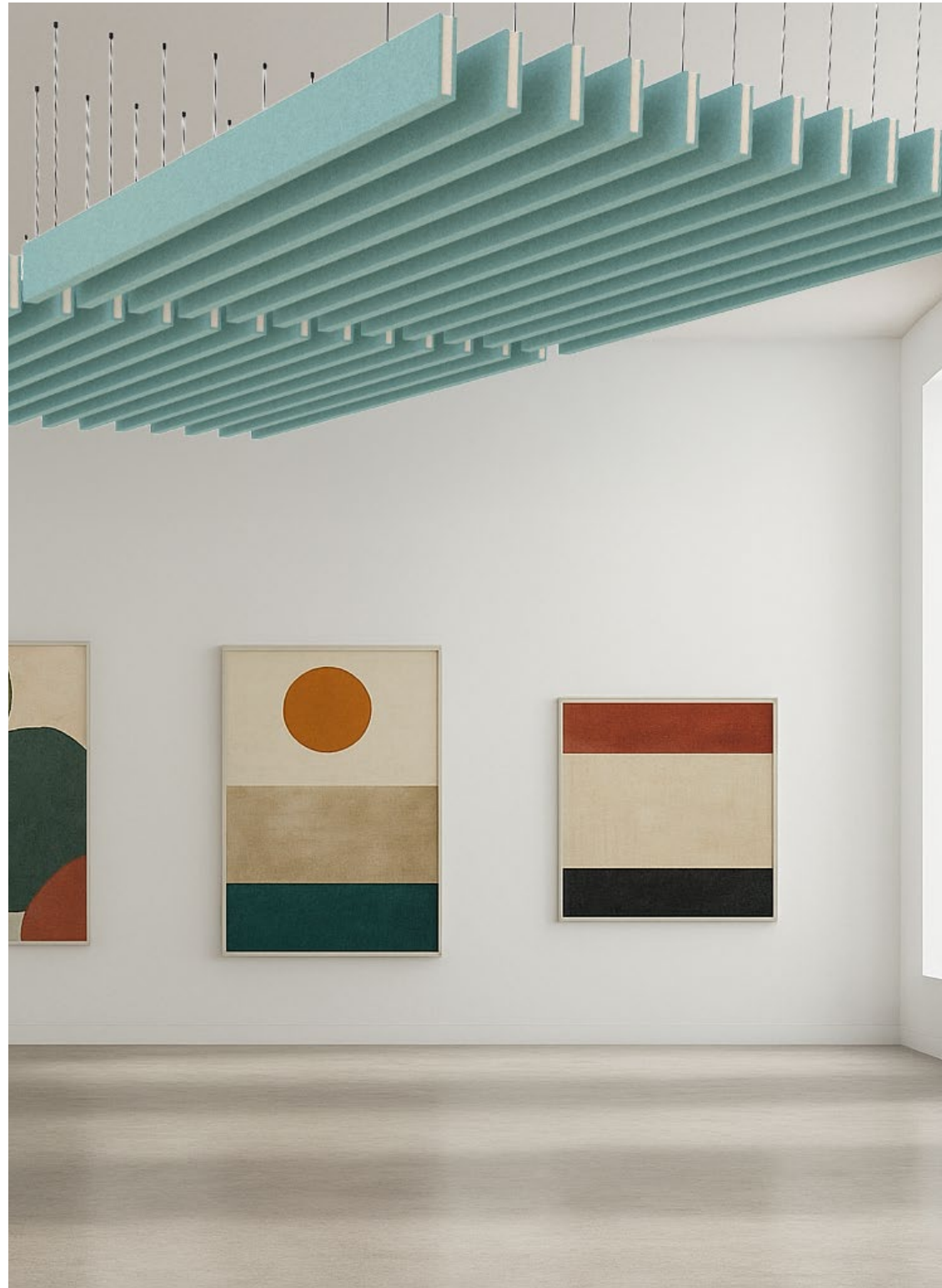
Dimensions and Specifications

ATTRIBUTE	DETAIL
Dimensions	Multiple sizes, typical 48" L x 12" H x 2" W (custom options available)
Material	9mm precision-cut PET felt
Finish Options	ONNiT Standard Color Palette + Custom Color Matching
Mounting	Adjustable aircraft cable system
Weight	Approx. 1.2 lb per sq. ft.
NRC Rating	Up to 1.00 (based on layout)
Fire Rating	ASTM E84 Class A
Sustainability	75% recycled PET, fully recyclable

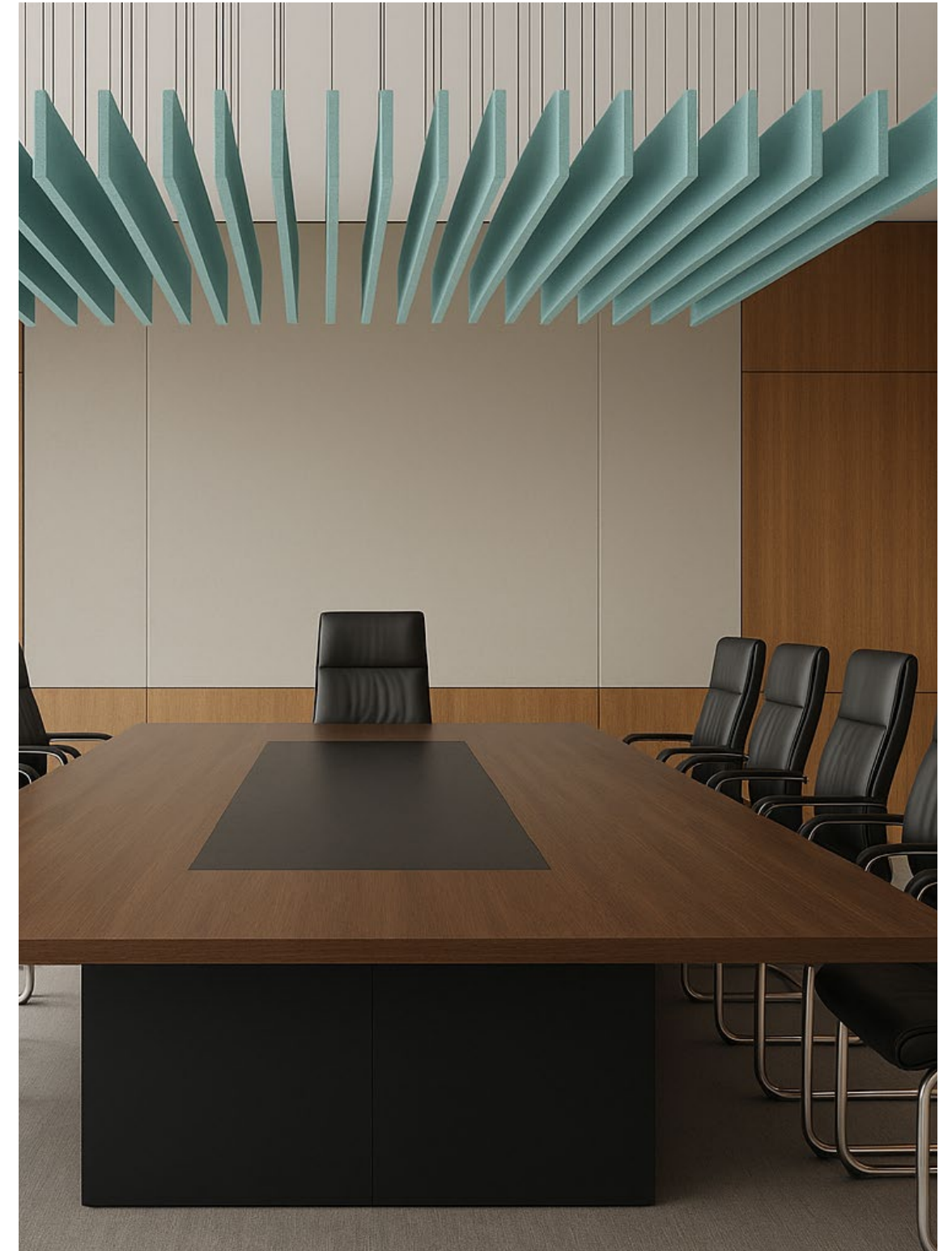


Use Cases

- Design studios
- Library and study spaces
- Open-plan offices



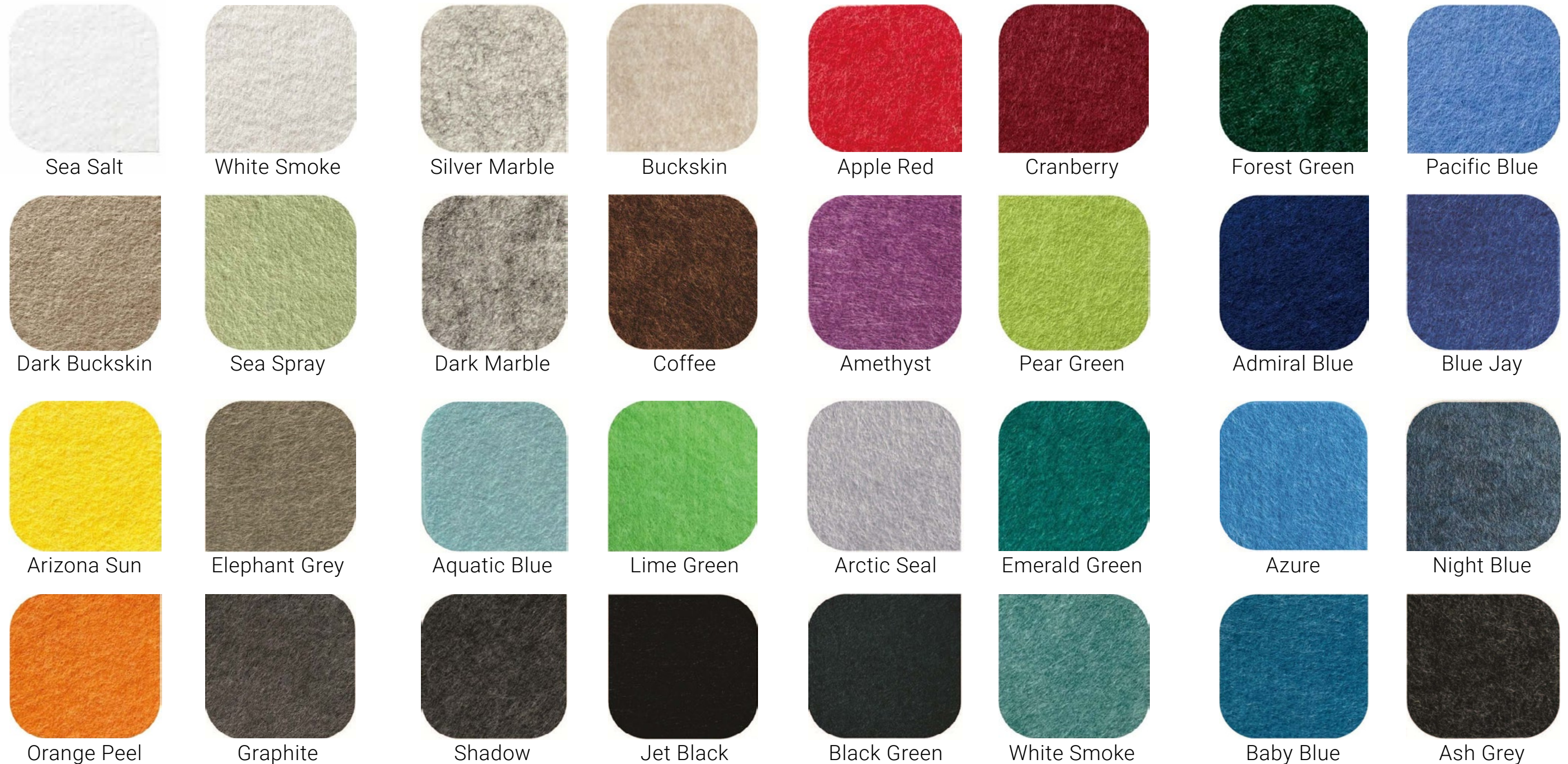
Galleries and museums



Executive boardrooms

Color That Grounds and Simplifies

Folio™ comes in 32 standard colors—from subtle tones to standout accents. Custom color-matching and finishes are available to fit any design narrative.



Need Something More Specific? Custom color matching and expanded palette options are available upon request.
Let Color Complete The Form - And Your Vision

Sustainability + Compliance

- Contains 75% post-consumer recycled PET
- Fully recyclable at end of use
- Made with OEKO-TEX® and GRS certified materials
- Low VOC, formaldehyde-free
- LEED credit eligible (Materials & Resources / EQ)

SGS



intertek
Total Quality. Assured.



A third-party certification that assesses products' ingredients, supply chain and manufacture for environmental, social and Buildin Code compliance. GreenRate Level A is a recognized initiative for Green Star Responsible Products credits.

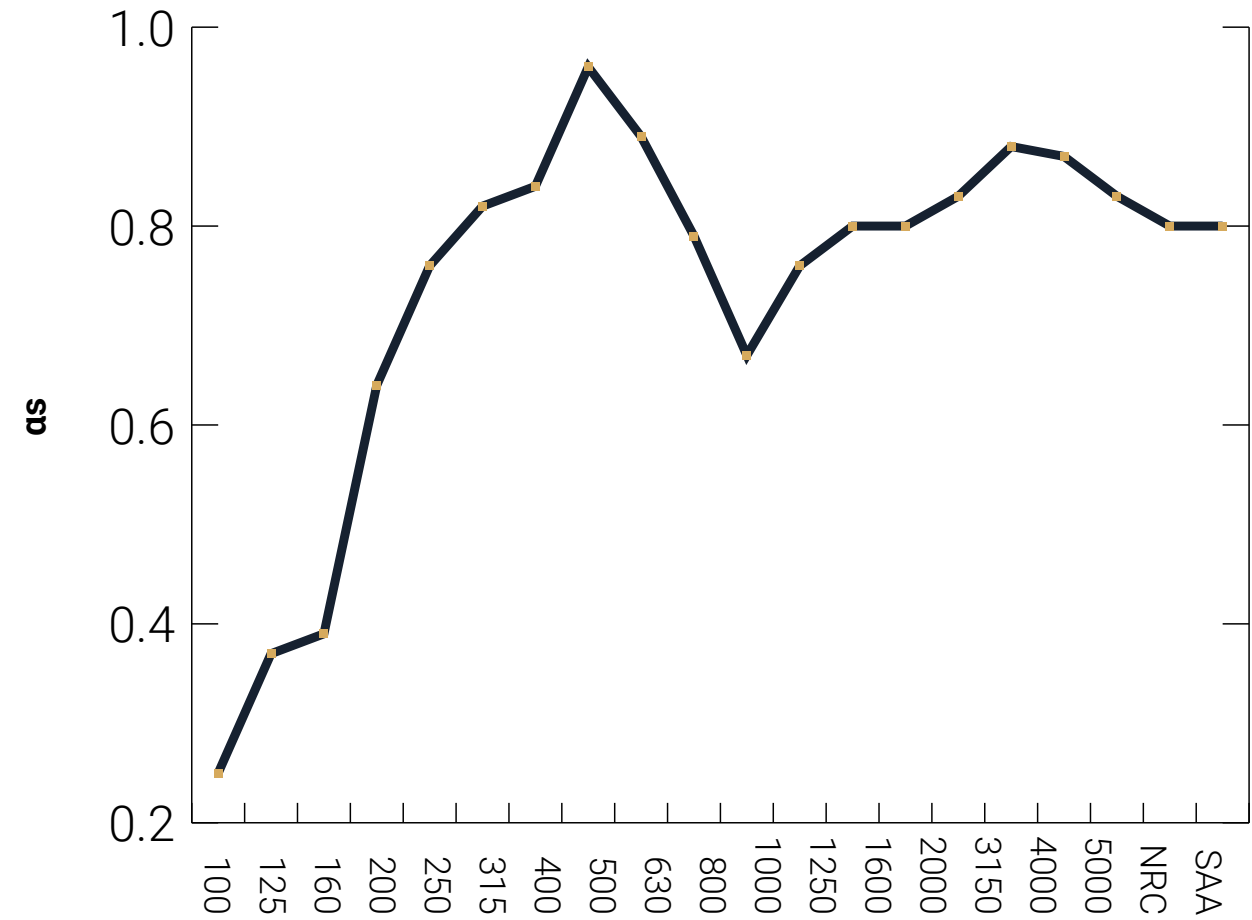


A certification tool recognising full ingredient transparency, compliant with core WELL Features and LEED Product Disclosure credits, that proves products are safe for human health.

Acoustic Testing Data

Volume of the reverberation room	Vs, m3	240	Installation Type:	E200
Room temperature	t1, °C	13	t2, °C	13
Relative humidity of test rooms	H1, %	70	H2, %	70

Frequency (Hz)	α_s
100	0.25
125	0.37
160	0.39
200	0.64
250	0.76
315	0.82
400	0.84
500	0.96
630	0.89
800	0.79
1000	0.67
1250	0.76
1600	0.80
2000	0.80
2500	0.83
3150	0.88
4000	0.87
5000	0.83
NRC	0.80
SAA	0.80



Sample description:

Sample Size (width*length), mm	1220*2440	Thickness, mm	9.0
Edge treatment	/	Mass, kg/m ²	2.05
Test Area, m ²	10.8		

intertek
Total Quality. Assured.



info@onnitsystems.com

(801) 619-7044



*Visit our online form and
configuration system*