



Dimensional Acoustic Wall Tiles





Dimensional Tile Series

Visual Depth. Tactile Form. Acoustic Performance.

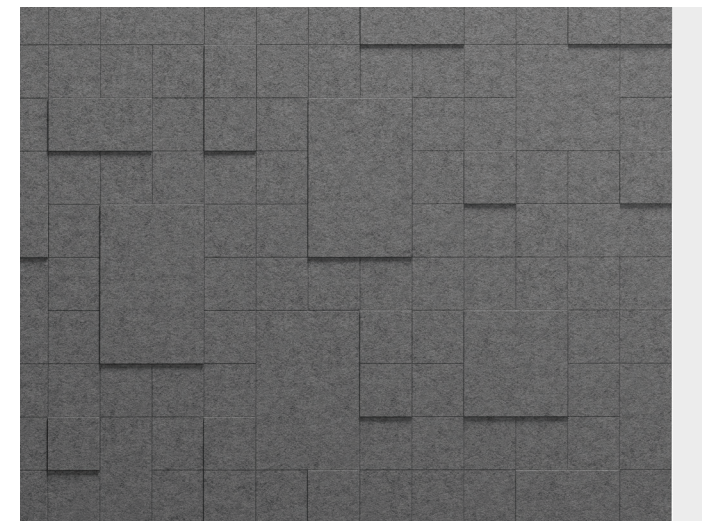
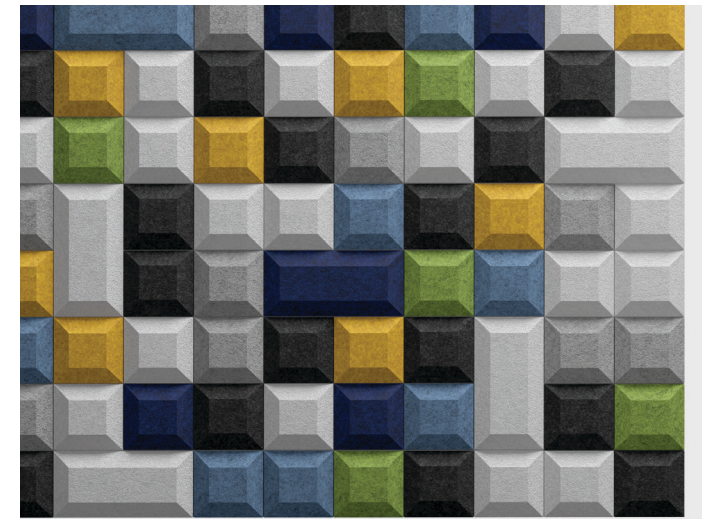
The Dimensional Tile Series by ONNiT brings sculptural texture and sound control to wall surfaces. With crisp edges, layered planes, and faceted profiles, these tiles create visual depth and acoustic clarity in a single solution. Dimensional Tiles provide a flexible system of tactile geometry and quiet refinement.

Standard Available Designs

- **Depth** Square and rectangular tile design
- **HEX** Honeycomb form with sculpted facets
- **SLATE** Layered planes that mimic organic stacked stone

Key Features

- Constructed from high-performance acoustic PET felt
- Bold, geometric profiles with sculptural relief
- Modular designs for repeatable patterns or one-of-a-kind layouts
- Quick installation with adhesive or screw mounting
- Available in 32 standard colors with custom color options
- Suitable for partial or full-wall installations
- Seamless visual continuity between panels
- Custom sizes available



Dimensions and Specifications

ATTRIBUTE	DETAIL
Dimensions	Varies by profile (approx. 6"–18" range)
Thickness	9mm or 12mm PET felt
Etch/Relief Depth	Varies by design, up to ¾" projection
Material	100% polyester (PET) felt
Recycled Content	75% Recycled Content



Design Your Space

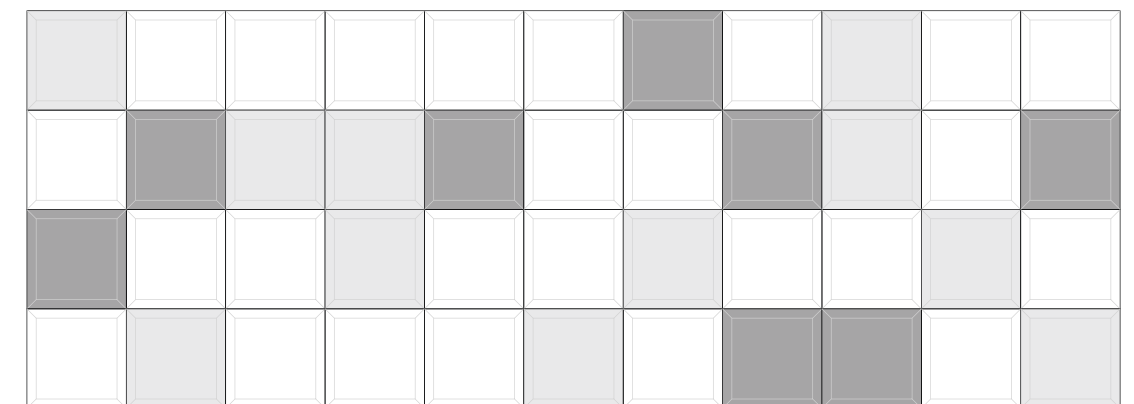
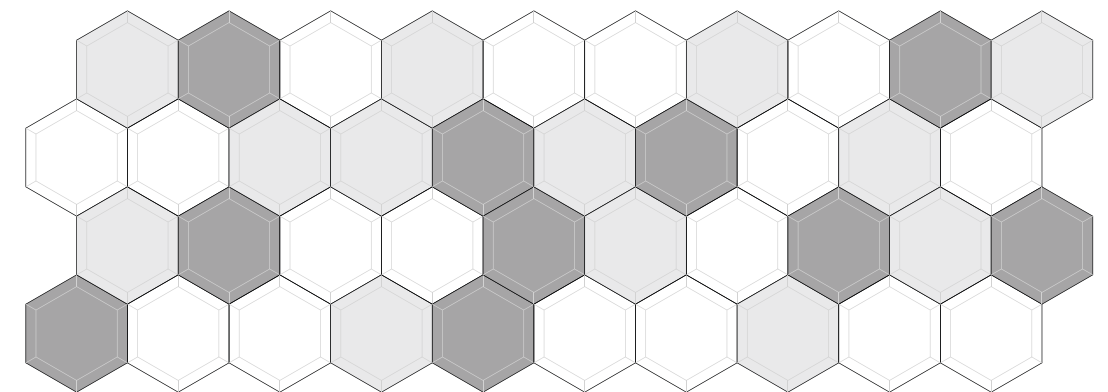
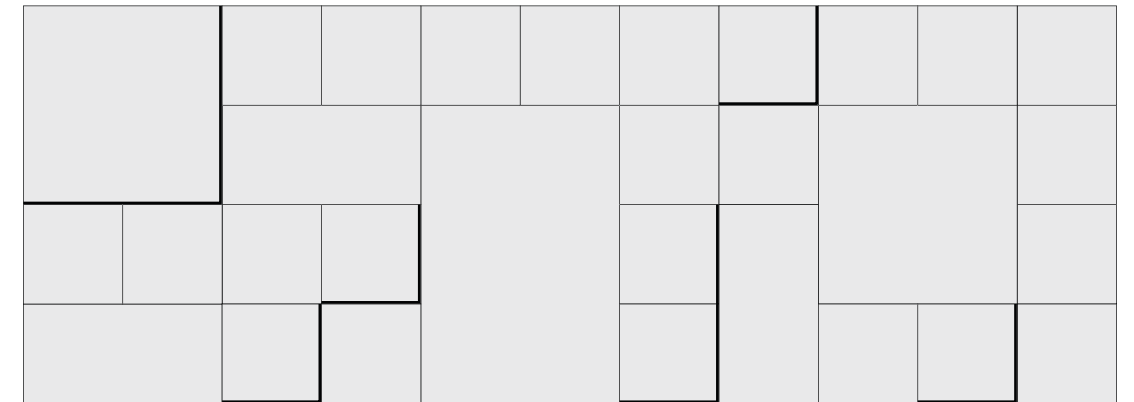
Shape Your Surfaces. Define Your Flow.

Dimensional Tiles offer both structured layouts and creative expression. We help guide layout design and panel selection for optimal acoustic and visual impact.

- Installation layout and quantity
- Spacing and orientation
- Installation and mounting preferences
- Color selection

Ordering & Customization

- Custom patterns, sizes, and colorways available
- Layout assistance, renderings, and install diagrams
- Quick ship available for select designs
- Contact ONNiT Sales for a quote or sample pack



Installation Layout & Quantity

Step 1: Define Installation Area

- Wall dimensions (Height x Width)
- Full wall coverage or partial feature?
- Horizontal or vertical orientation?

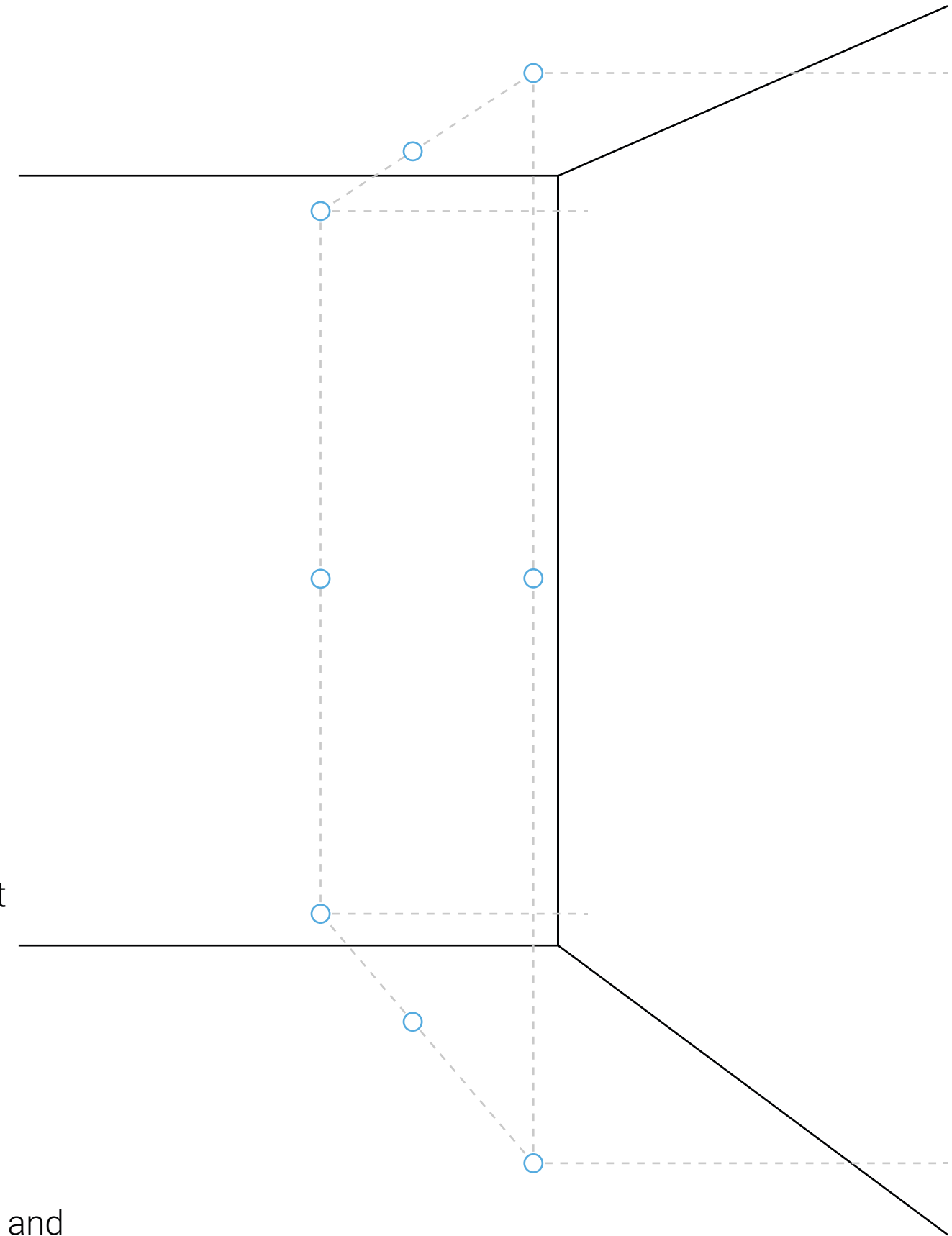
Step 2: Select Design(s)

- Depth, Hex and Slate
- Mix and match styles across walls or rooms

Step 3: Determine Quantity

- Our team is available to assist in estimating coverage and layout

Optional Tip: Send us your wall dimensions or architectural drawings and we'll help provide a full layout plan with material takeoff assistance.



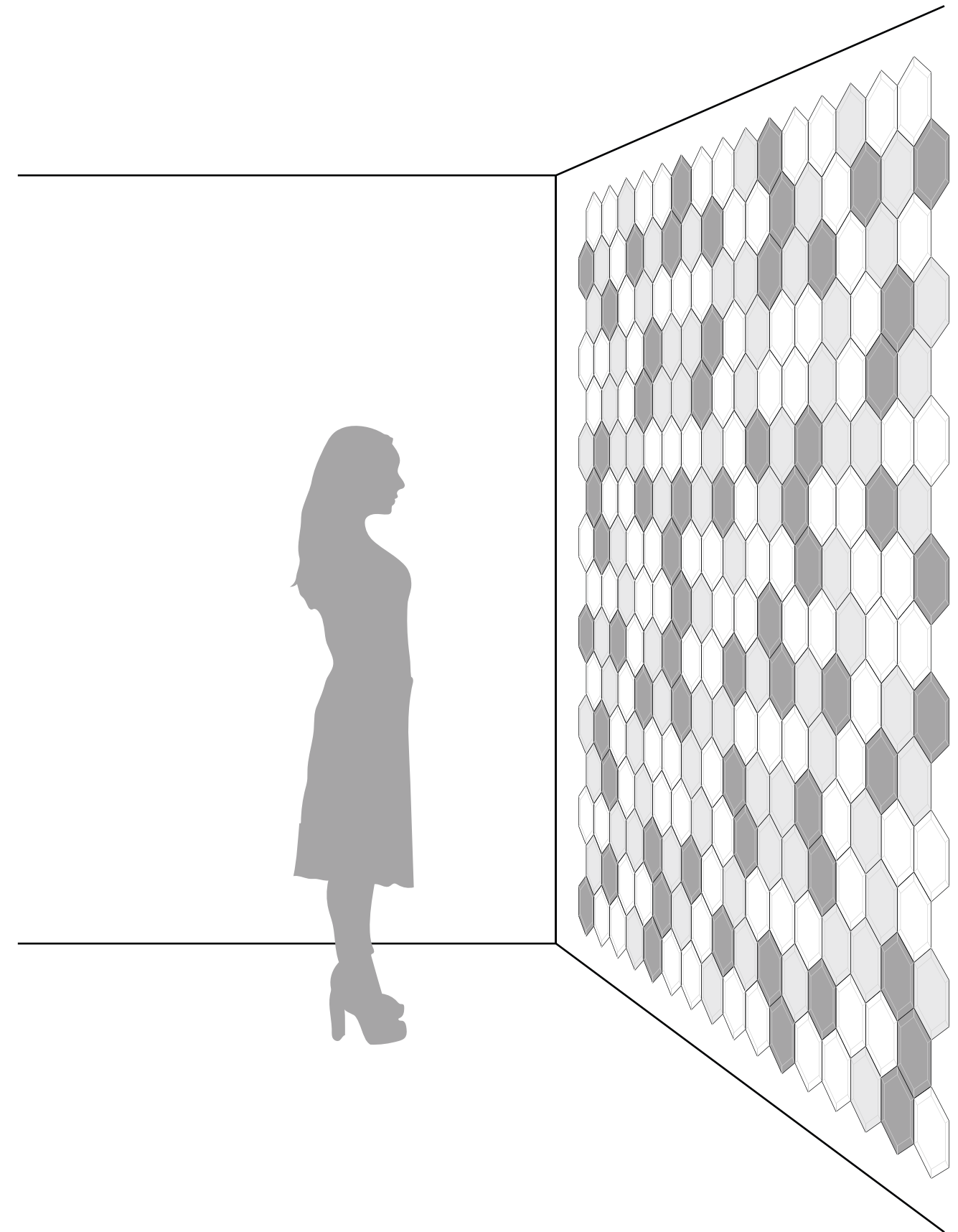
Spacing & Orientation

Installation Orientation:

- Horizontal, vertical, or mixed grid layouts
- Use full coverage or arrange as accents/clusters
- Combine profiles to define different zones

Spacing Options:

- Butt joint for seamless continuity
- ¼" or ½" reveal for grid shadow line effect
- Staggered, tiled, or radial placement patterns



ONNiT design team available for layout mockups and visualizations.

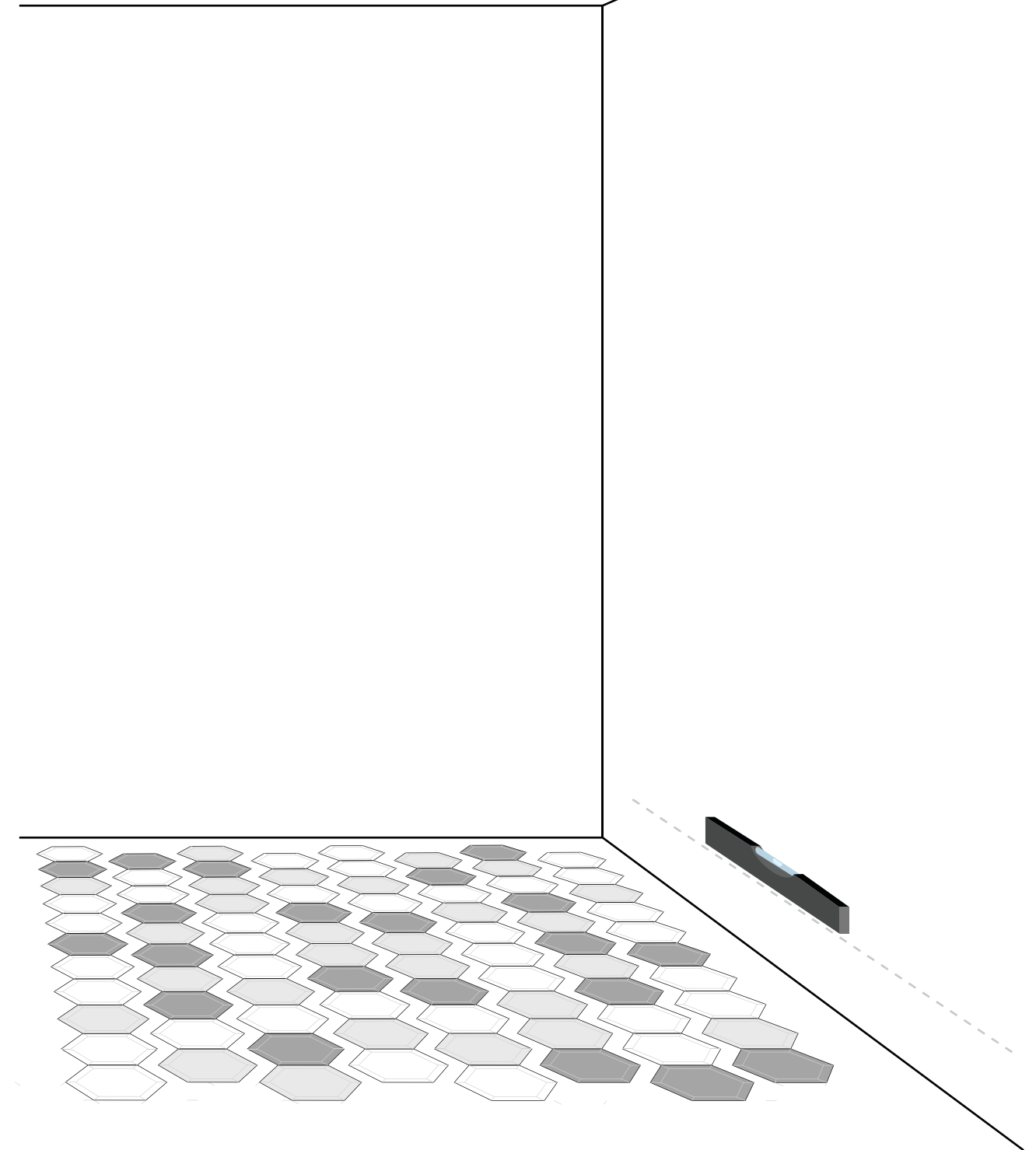
Installation & Mounting

Tools & Materials

- ONNiT Commercial Adhesive Tabs (4 per tile recommended)
- Loctite® PL Premium Construction Adhesive or equivalent
- Level or laser line
- Tape measure
- Pencil or chalk line
- Clean microfiber cloth

Before You Begin

- Ensure the wall surface is clean, smooth, dry, and dust-free
- Lay out your tile arrangement on the floor or with a printed grid
- Mark a level line to align the first row of tiles



Step-by-Step Instructions

1. Peel and Place Tabs

- Peel 1 of the 4 adhesive tabs from its branded liner
- Firmly press and rub the entire tab (including the edges) onto the back side of the tile
- Recommended tab positions: near each corner of the tile, approximately 1–2" from the edge

2. Add Construction Adhesive

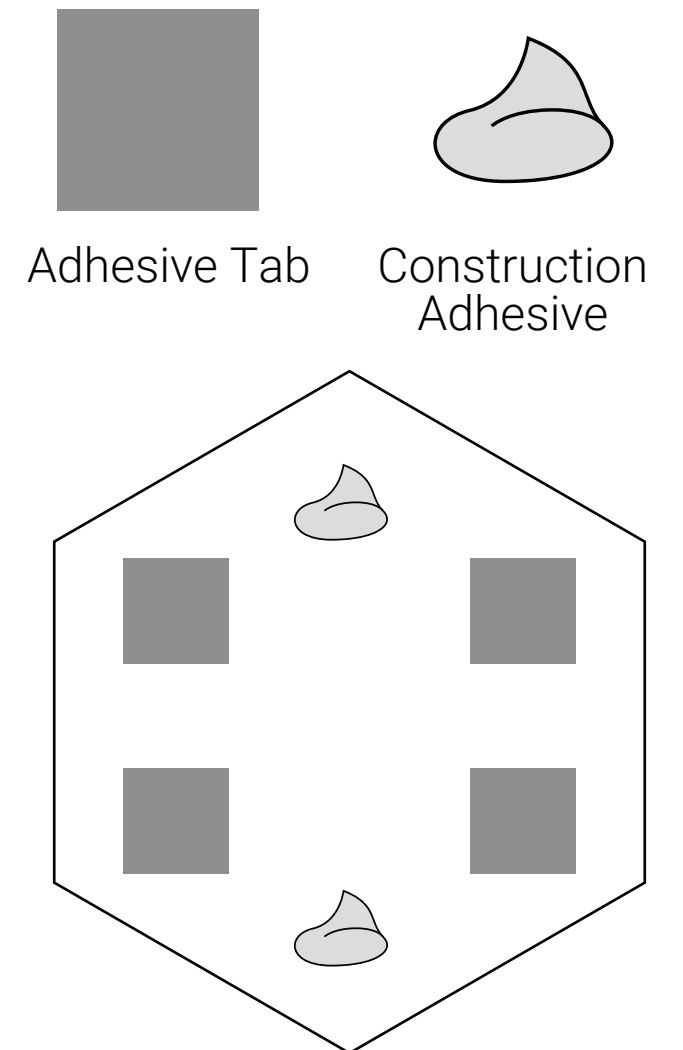
- Between the adhesive tabs, apply a ¼-inch bead or dot of construction adhesive
- Keep adhesive at least 1" away from tile edges to avoid squeeze-out
- Press the adhesive slightly beyond tab zones to ensure solid contact with wall

3. Apply Tile to Wall

- Line up the tile using your level mark
- Firmly press the tile onto the wall and hold pressure for 5–10 seconds
- Press across the full tile surface to ensure adhesive and tabs bond evenly

4. Repeat and Align

- Continue with adjacent tiles, ensuring tight seams or intended spacing (if part of a pattern)
- For best results, work row-by-row, checking alignment frequently with a level



Finish Options - Color with Character. Form with Purpose.

Choose from ONNiT’s 32 standard PET colors, ranging from subtle neutrals to bold accent hues. Create tonal variations or contrast within a single wall layout to highlight form and texture.



Custom Options: • Custom color matching available • Multicolor tile sets available upon request



Sustainability + Compliance

- Made from 75%+ post-consumer recycled PET
- Made with Certified OEKO-TEX® and Global Recycled Standard (GRS) materials
- Formaldehyde-free and low VOC
- Moisture, mold and mildew resistant
- Contributes to LEED MR and EQ credits



Acoustic Testing Data

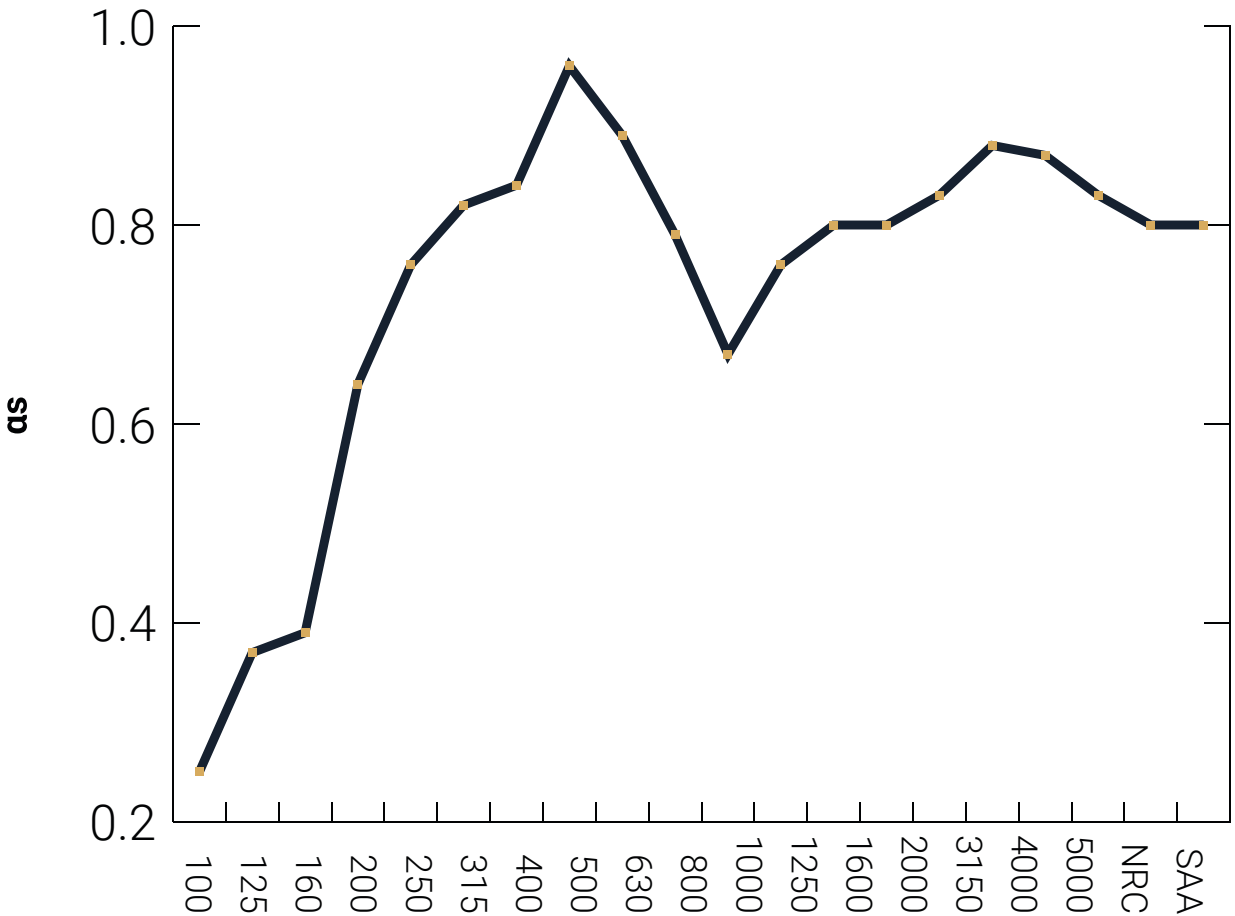
Volume of the reverberation room	Vs, m3	240	Installation Type:	E200
Room temperature	t1, °C	13	t2, °C	13
Relative humidity of test rooms	H1, %	70	H2, %	70

Sample description:

Sample Size (width*length), mm	1220*2440	Thickness, mm	9.0
Edge treatment	/	Mass, kg/m²	2.05
Test Area, m²	10.8		



Frequency (Hz)	α_s
100	0.25
125	0.37
160	0.39
200	0.64
250	0.76
315	0.82
400	0.84
500	0.96
630	0.89
800	0.79
1000	0.67
1250	0.76
1600	0.80
2000	0.80
2500	0.83
3150	0.88
4000	0.87
5000	0.83
NRC	0.80
SAA	0.80





info@onnitsystems.com

(801) 619-7044



*Visit our online form and
configuration system*